



PARTS CATALOG

Published

2011/5 (May.)

0CNP4-G04000

Directions for the Parts Catalog.

1. The parts stipulated in this Parts Catalog are not necessarily standard equipped parts.
2. Parts may change without prior notice.
3. The following is an example of the Parts Catalog format.

REF.	LEV.	PARTS NO.	DESCRIPTION	Q'TY						I	R
				(A)	(B)	(C)	(D)	(E)	(F)		
1	1	729595-51390	FUEL INJECTION PUMP	1	1	1	1	1			1
1-1	1	729595-51391	FUEL INJECTION PUMP	1	1	1	1	1		N	1
		(A=E00185) (B=E00200)									
3	2	26022-060162	SCREW M 6X 16	9	9	9	9	9			
3-1	2	26022-060162	SCREW M 6X 16	4	4	4	4	4		K	
		(A=E00156) (B=E00156) (C=E00156) (D=E00156) (E=E00156)									
4	2	129470-51040	CAMSHAFT	1	1	1	1	1			
5	2	122710-51050	BEARING, ROLLER	2	2	2	2	2			
6	2	129470-51060	RETAINER	1	1	1	1	1			

Remarks
(1) BOOST COMPEMSATOR TYPE. OPTIONAL PART, TO E00155,(4JH-DT, 4JH-DTZ

① Ref. No.

The Ref. No. listed may not be in accordance with the illustration Ref. No.

(Ex.) Illustration No.

List Ref No.

1

1

(Before change)

1-1

(After change)

For interchangeable symbols N, R and K, illustrations for new parts may be abbreviated.

② Lev. (Level)

Level indication

The numbers below indicate the level of relativity towards the main part.

1 ----- Main parts (Assembly parts)

2 ----- Sub component included in " 1 ".

3 ----- Sub component included in " 2 ".

Note) Parts that are not for sale are partially illustrated but not listed.

③ Interchangeability Mark

When a part change takes place, one of the following interchangeability symbols is indicated beside the part.

Symbol	Interchangeability	Contents note
N	Old $\begin{matrix} \leftarrow \text{Yes} \\ \text{No} \rightarrow \end{matrix}$ New	New Part is interchangeable for Old Part but Old Part is not interchangeable for New Part.
Q	Old $\begin{matrix} \leftarrow \text{No} \\ \text{Yes} \rightarrow \end{matrix}$ New	New Part is not interchangeable for Old Part but Old Part is interchangeable for New Part.
R	Old $\begin{matrix} \leftarrow \text{Yes} \\ \text{Yes} \rightarrow \end{matrix}$ New	New/ Old Parts are both interchangeable.
S	Old $\begin{matrix} \leftarrow \text{No} \\ \text{No} \rightarrow \end{matrix}$ New	New/ Old Parts are both not interchangeable.
W		Part discontinued.
Z		Part newly added.
F		Not interchangeable by a single part but interchangeable together with related parts.
K		Changes only for used parts quantities.

④ Effective Machine No.

When a part changes, the effective Machine No. will be indicated in the (A)-(F) column.

Product Symbol	Product No.	Product Symbol	Product No.
C	Clutch No. Compressor No.	F	Machine No. (Agricultural Equip.)
D	Drive No.	M	Machine No.
E	Engine No.	Note 1)	Date

Note 1) A date may follow the symbol. (Ex.) 1996.01

Note 2) " XXX " are for parts that could not be predicted or for engine models that could not be identified.

Note 3) (A=E00185) is the E (Engine Serial Number) for the column (A) model (in this case 4JH-DT) after the parts design change.

⑤ Remarks Mark

Figures or alphabets (symbols) are entered in the remarks column.

The comments (remarks) on parts that are indicated at the bottom of the illustration are the same symbols as those stated above.

CONTENTS

MODEL : GA100E-SKG,F(N4040

PC NO : 0CNP4-G03900

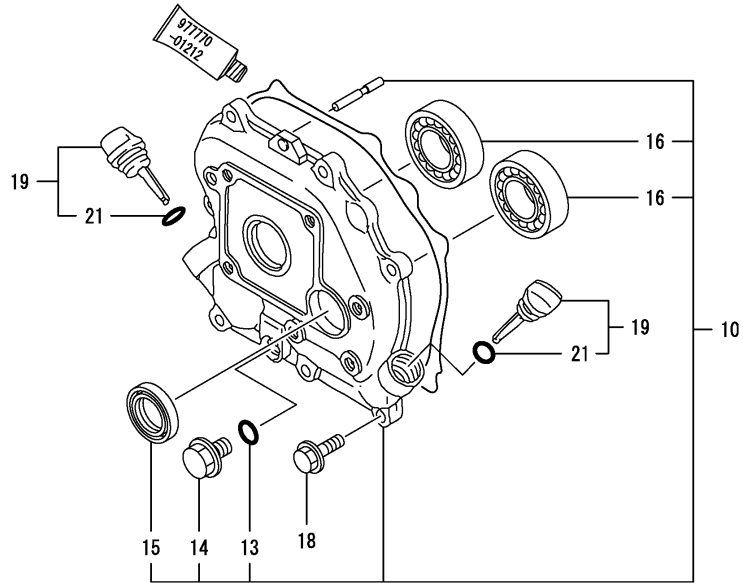
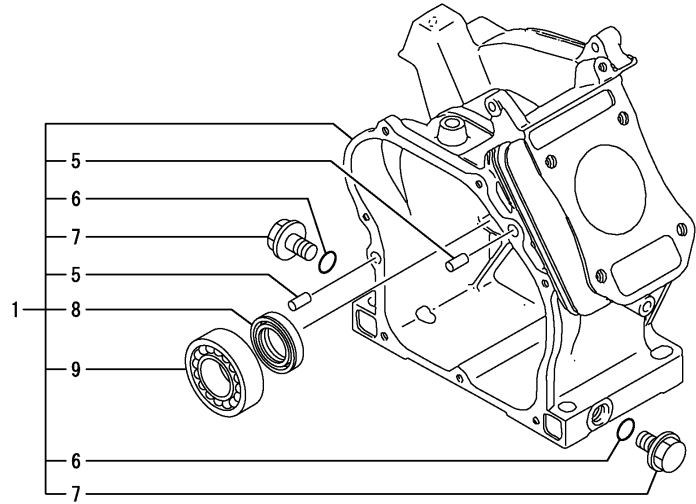
Fig.No. GROUP NAME

ENGINE SECTION

1. CYLINDER BLOCK
2. CYLINDER HEAD & BONNET
3. LABEL
4. AIR CLEANER & MUFFLER
5. CRANKSHAFT,PISTON & CAMSHAFT
6. FUEL TANK & FUEL PIPE
7. CARBURETOR
8. CARBURETOR
9. GOVERNOR & CONTROL DEVICE
10. FLYWHEEL MAG.& STARTING DEVICE

Fig.No. GROUP NAME

Fig.1. CYLINDER BLOCK



Remarks
 (REMARKS)"EFFECTIVE MACHINE NO." OF
 ENGINE IS INDICATED ON THE
 ENGINE LABEL WHICH IS SHOWN
 IN FIG.10.

0CNP4-G03900 1. CYLINDER BLOCK

(A)=GA100E-SKG
 (B)=GA100E-SKF
 (C)=

(D)=
 (E)=
 (F)=

REF.	LEV.	PARTS NO.	DESCRIPTION	QTY						I	R
				(A)	(B)	(C)	(D)	(E)	(F)		
1	1	760496-01560	BLOCK ASSY, CYLINDER	1	1						
5	2	114270-01600	PARALLEL PIN 8X12	2	2						
6	2	24311-000100	O-RING 1A P-10.0	2	2						
7	2	26106-100162	BOLT M10X 16 PLATED	2	2						
8	2	160510-02220	SEAL, OIL	1	1						
9	2	24101-062030	BALL BEARING	1	1						
10	1	760490-01500	COVER,CRANKCASE	1	1						
13	2	24311-000100	O-RING 1A P-10.0	1	1						
14	2	26106-100162	BOLT M10X 16 PLATED	1	1						
15	2	160510-02220	SEAL, OIL	1	1						
16	2	24101-062030	BALL BEARING	2	2						
18	1	26476-060202	BOLT M 6X 20,TAPPING	7	7						
19	1	160611-01741	CAP ASSY	2	2						
21	2	160490-01760	O-RING	2	2						

Fig.2. CYLINDER HEAD & BONNET

OCNP4-G03900 2. CYLINDER HEAD & BONNET

(A)=GA100E-SKG

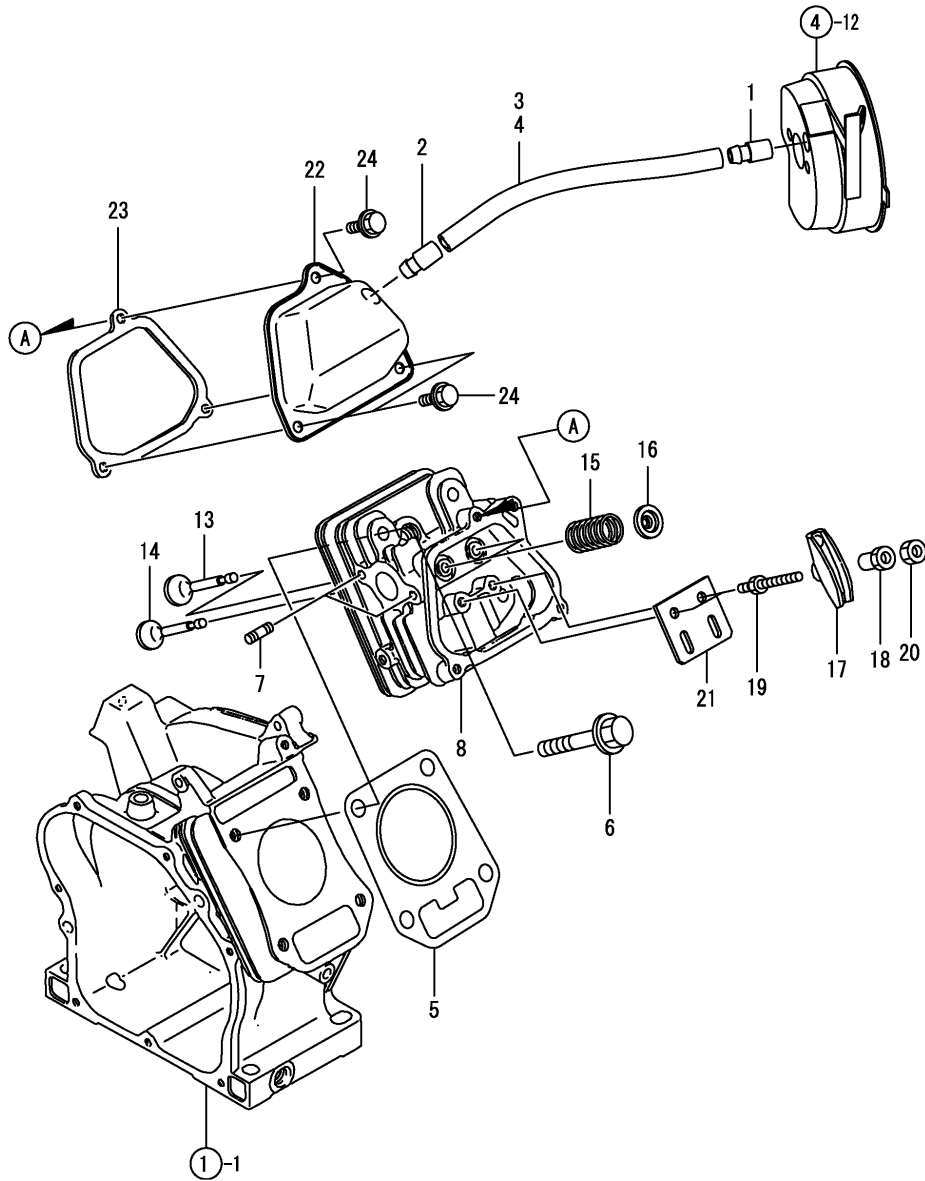
(B)=GA100E-SKF

(C)=

(D)=

(E)=

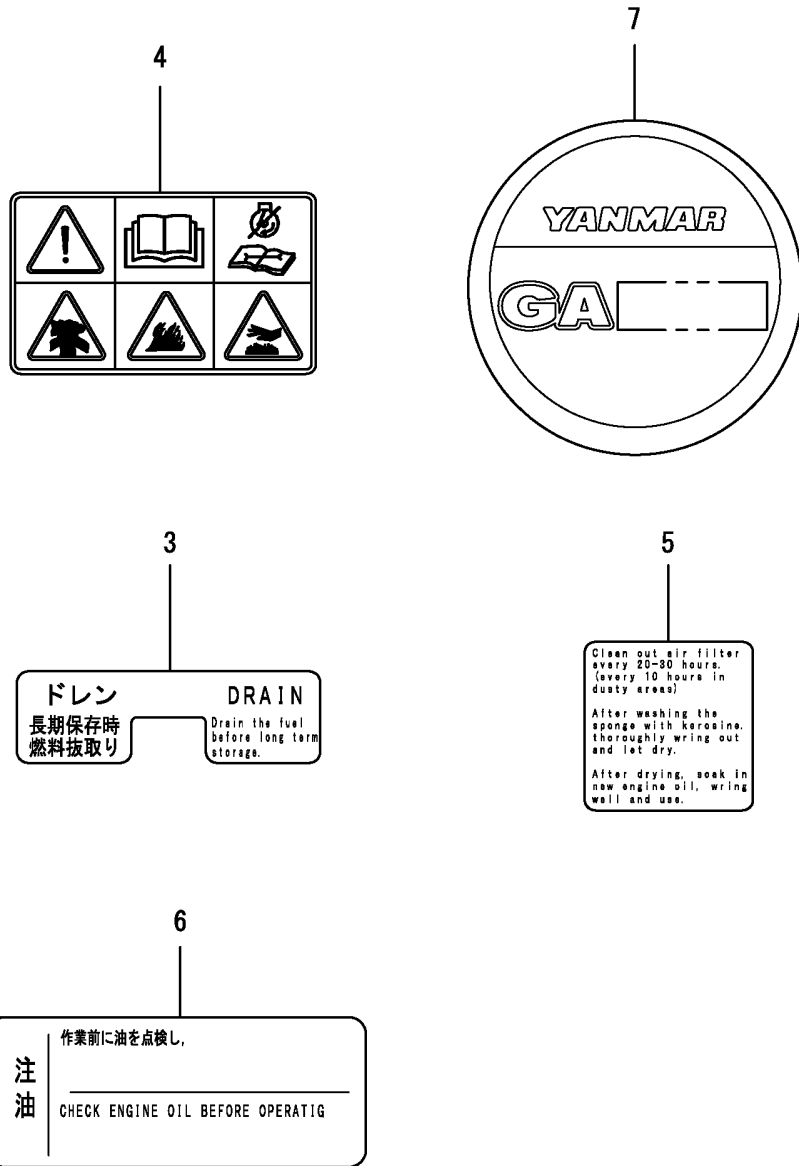
(F)=



REF.	LEV.	PARTS NO.	DESCRIPTION	Q'TY						I	R
				(A)	(B)	(C)	(D)	(E)	(F)		
1	1	160520-03050	BREATHER.MT.	1	1						
2	1	160610-03050	BREATHER ASSY	1	1						
3	1	160510-03180	PIPE, BREATHER	1							
4	1	160593-03180	HOSE, BREATHER		1						
5	1	160498-01330	GASKET, CYL. HEAD	1	1						
6	1	160610-04201	BOLT M 8X 53	4	4						
7	1	160610-04620	BOLT M6X 16	2	2						
8	1	160490-11010	HEAD ASSY, CYLINDER	1	1						
13	1	160664-11100	INLET VALVE	1	1						
14	1	160664-11110	EXHAUST VALVE	1	1						
15	1	160490-11120	SPRING, VALVE	2	2						
16	1	160664-11180	RETAINER, VALVE	2	2						
17	1	160699-11200	ARM, VALVE ROCKER	2	2						
18	1	160690-11222	PIVOT,ROCKER ARM	2	2						
19	1	160690-11271	BOLT	2	2						
20	1	160690-11280	NUT M6X 0.5	2	2						
21	1	160490-11290	GUIDE PLATE	1	1						
22	1	160490-11300	BONNET	1	1						
23	1	160490-11311	GASKET, BONNET	1	1						
24	1	26476-060142	BOLT M 6X 14,TAPPING	3	3						

Remarks
 (REMARKS)"EFFECTIVE MACHINE NO." OF
 ENGINE IS INDICATED ON THE
 ENGINE LABEL WHICH IS SHOWN
 IN FIG.10.

Fig.3. LABEL



0CNP4-G03900 3. LABEL

(A)=GA100E-SKG
(B)=GA100E-SKF
(C)=

(D)=
(E)=
(F)=

REF.	LEV.	PARTS NO.	DESCRIPTION	Q'TY						I	R
				(A)	(B)	(C)	(D)	(E)	(F)		
3	1	160690-07260	LABEL, DRAIN	1	1						
4	1	160991-07260	LABEL	1	1						
5	1	160664-07370	LABEL, AIR CLEANER	1							
6	1	160692-07370	LABEL, AIR CLEANER		1						
7	1	160496-07490	LABEL, FINGER START	1	1						

Remarks
(REMARKS)"EFFECTIVE MACHINE NO." OF
ENGINE IS INDICATED ON THE
ENGINE LABEL WHICH IS SHOWN
IN FIG.10.

Fig.4. AIR CLEANER & MUFFLER

(A)=GA100E-SKG

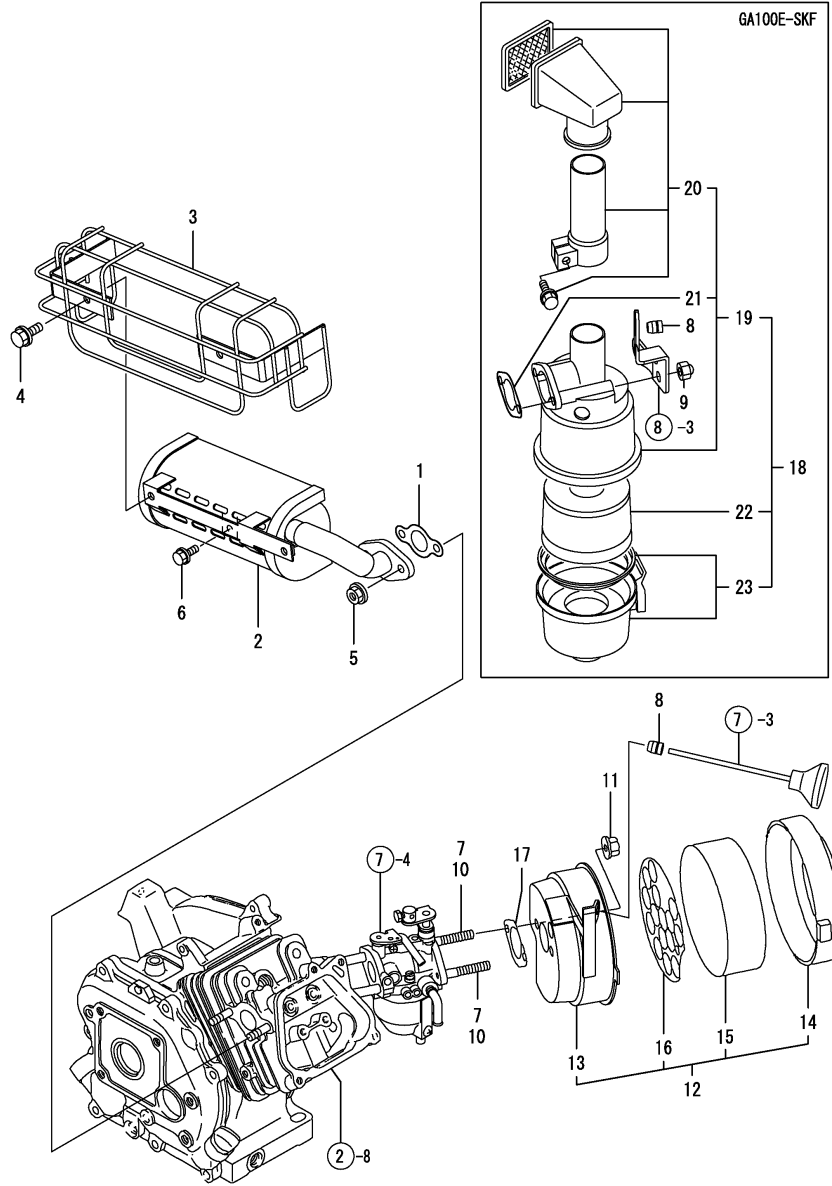
(B)=GA100E-SKF

(C)=

(D)=

(E)=

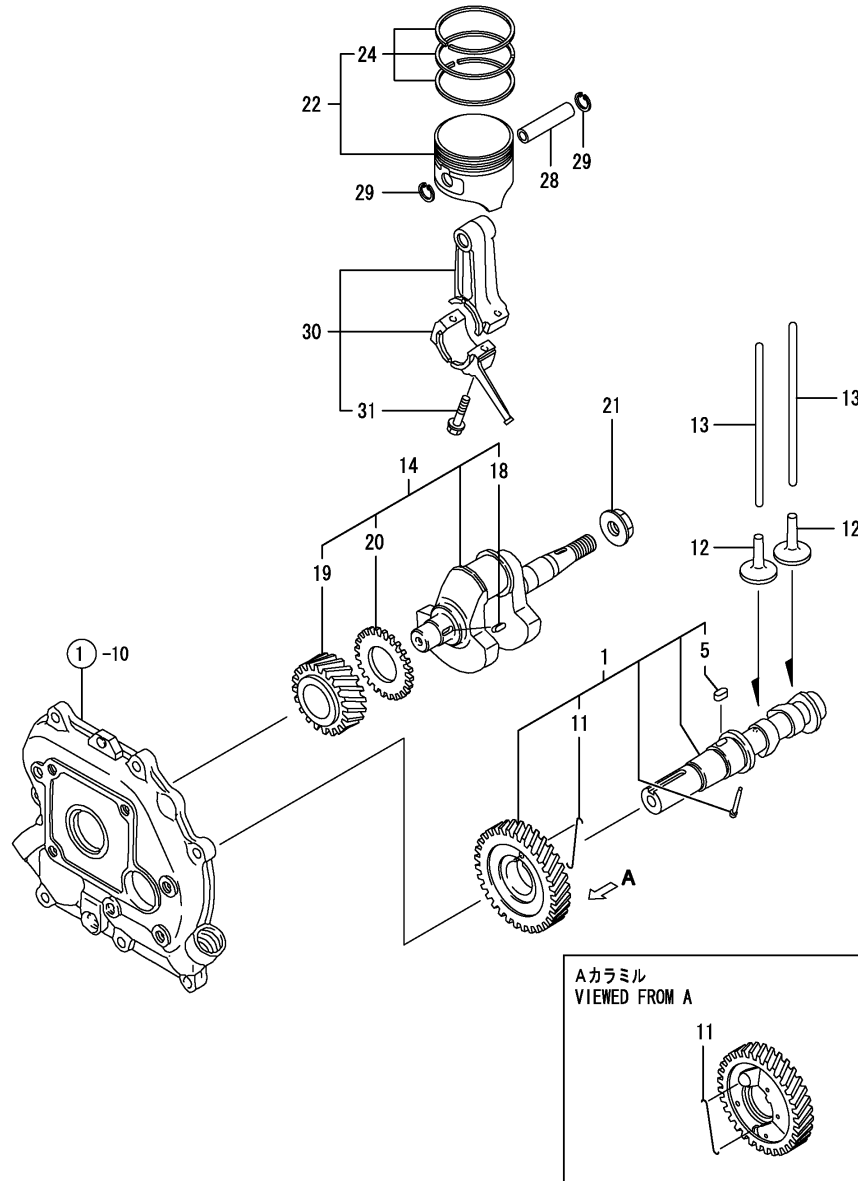
(F)=



REF.	LEV.	PARTS NO.	DESCRIPTION	Q'TY						I	R
				(A)	(B)	(C)	(D)	(E)	(F)		
1	1	160510-13201	GASKET, MUFFLER	1	1						
2	1	160498-13620	MUFFLER ASSY	1	1						
3	1	160498-13690	COVER	1	1						
4	1	114252-13950	BOLT M 6X 8 PLATED	2	2						
5	1	26366-060002	NUT M 6	2	2						
6	1	26476-060142	BOLT M 6X 14,TAPPING	1	1						
7	1	160492-04310	BOLT, M6X120		2						
8	1	160763-12600	GROMMET, AIR CLEANER	1	1						
9	1	26657-060002	CAP NUT M 6		2						
10	1	160790-04600	BOLT M 6X 75		2						
11	1	114250-12300	U-NUT		2						
12	1	160498-12500	CLEANER ASSY, AIR	1							
13	2	160498-12050	BODY, AIR CLEANER	1							
14	2	160610-12530	CAP, AIR CLEANER	1							
15	2	160610-12540	ELEMENT, AIR CLEANER	1							
16	2	160610-12550	HOLDER, ELEMENT	1							
17	1	160496-56800	GASKET, INTAKE	1							
18	1	160492-12752	CLEANER ASSY, AIR		1						
19	2	160492-12651	BODY ASSY		1						
20	3	160492-12610	CAP CMP		1						
21	3	160492-12670	PACKING		1						
22	2	160492-12630	ELEMENT ASSY		1						
23	2	160492-12941	SUMP ASSY, OIL		1						

Remarks
 (REMARKS)"EFFECTIVE MACHINE NO." OF
 ENGINE IS INDICATED ON THE
 ENGINE LABEL WHICH IS SHOWN
 IN FIG.10.

Fig.5. CRANKSHAFT,PISTON & CAMSHAFT



0CNP4-G03900 5. CRANKSHAFT,PISTON & CAMSHAFT

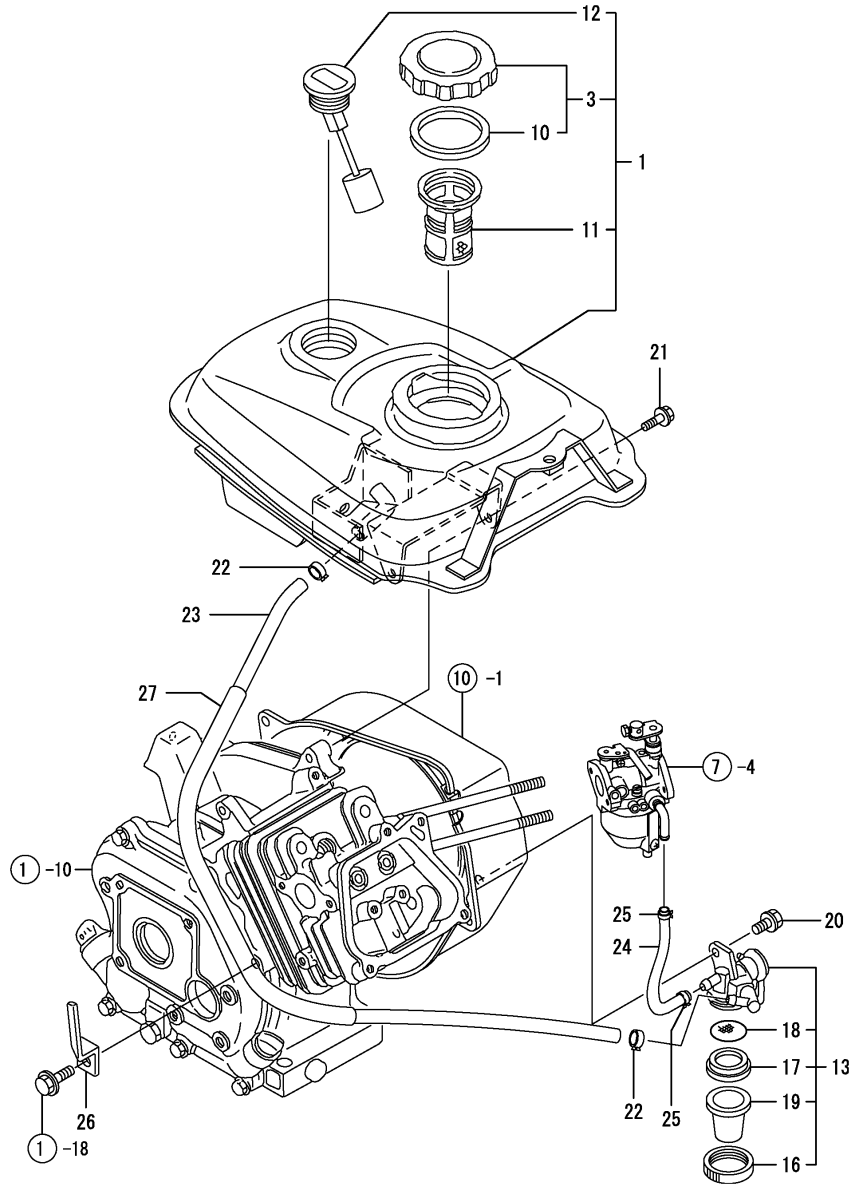
(A)=GA100E-SKG
(B)=GA100E-SKF
(C)=

(D)=
(E)=
(F)=

REF.	LEV.	PARTS NO.	DESCRIPTION	QTY						I	R
				(A)	(B)	(C)	(D)	(E)	(F)		
1	1	160498-14051	CAM-SHAFT ASSY	1	1						
5	2	114250-21290	KEY 4X 7	1	1						
11	2	160611-14560	SPRING	1	1						
12	1	160490-14200	TAPPET	2	2						
13	1	160490-14400	ROD,PUSH	2	2						
14	1	760498-21700	CRANKSHAFT ASSY	1	1						
18	2	160610-21290	KEY 4X 10	1	1						
19	2	160530-21200	GEAR, CRANKSHAFT	1	1						
20	2	160590-21210	GEAR, IDLE	1	1						
21	1	26376-120002	U-NUT M12	1	1						
22	1	160496-22010	PISTON ASSY	1	1						
24	2	760496-22500	RING SET, PISTON	1	1						
28	1	160490-22300	PIN, PISTON	1	1						
29	1	22252-000120	CIRCLIP 12	2	2						
30	1	160490-23030	ROD ASSY, CONNECTING	1	1						
31	2	26106-060302	BOLT M 6X 30 PLATED	2	2						

Remarks
(REMARKS)"EFFECTIVE MACHINE NO." OF
ENGINE IS INDICATED ON THE
ENGINE LABEL WHICH IS SHOWN
IN FIG.10.

Fig.6. FUEL TANK & FUEL PIPE



0CNP4-G03900 6. FUEL TANK & FUEL PIPE

(A)=GA100E-SKG
(B)=GA100E-SKF
(C)=

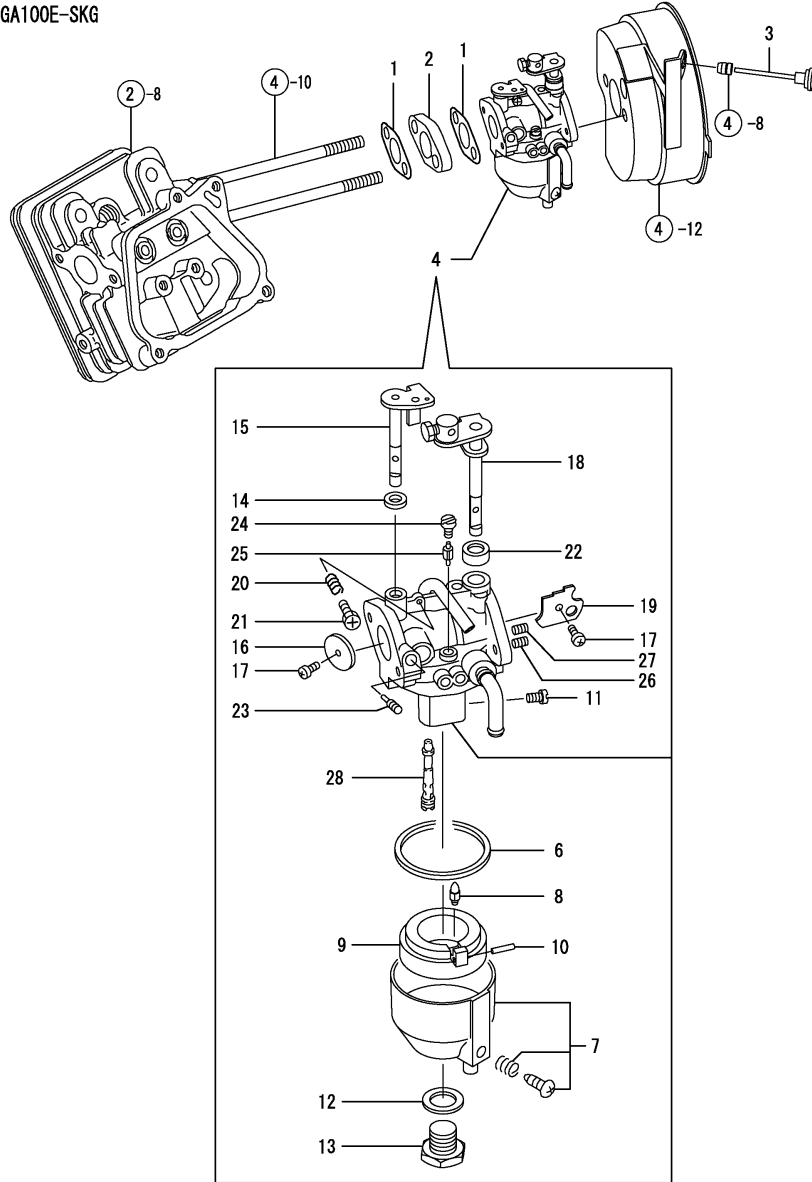
(D)=
(E)=
(F)=

REF.	LEV.	PARTS NO.	DESCRIPTION	Q'TY						I	R
				(A)	(B)	(C)	(D)	(E)	(F)		
1	1	760498-55720	TANK,FUEL(WHITE)(14)	1	1						
3	2	160690-55150	CAP ASSY, FUEL TANK	1	1						
10	3	160393-55050	GASKET, TANK CAP	1	1						
11	2	160610-55100	STRAINER	1	1						
12	2	160708-55150	GAUGE, FUEL	1	1						
13	1	160692-55300	COCK ASSY, FUEL	1	1						
I	16	2	160710-55360	RING	1	1					
I	17	2	160710-55370	GASKET	1	1					
I	18	2	160710-55382	FILTER	1	1					
19	2	160710-55390	CUP	1	1						
20	1	26106-060102	BOLT 6X 10 PLATED	1	1						
21	1	26476-060142	BOLT M 6X 14,TAPPING	3	3						
22	1	106990-44660	CLIP,HOSE	2	2						
23	1	160730-59371	HOSE,FUEL	1	1						
24	1	160820-59391	HOSE,FUEL	1	1						
25	1	119520-03990	HOSE CLAMP	2	2						
26	1	160260-59900	CLAMP, CORD	1	1						
27	1	160690-59400	PROTECTOR, PIPE	1	1						

Remarks
(REMARKS)"EFFECTIVE MACHINE NO." OF
ENGINE IS INDICATED ON THE
ENGINE LABEL WHICH IS SHOWN
IN FIG.10.

Fig.7. CARBURETOR

GA100E-SKG



OCNP4-G03900 7. CARBURETOR

(A)=GA100E-SKG
(B)=GA100E-SKF
(C)=

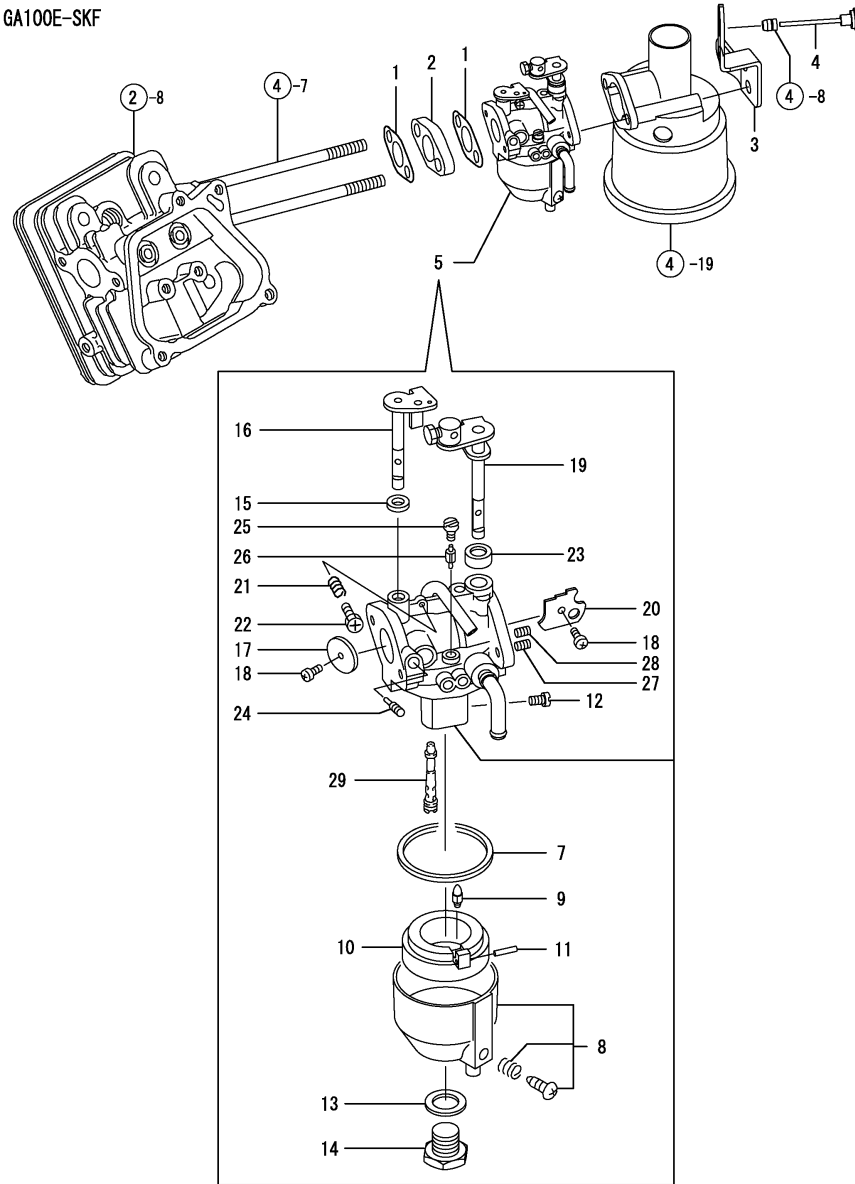
(D)=
(E)=
(F)=

REF.	LEV.	PARTS NO.	DESCRIPTION	QTY						I	R
				(A)	(B)	(C)	(D)	(E)	(F)		
1	1	160667-56151	GASKET, CARBURETOR	2							
2	1	160667-56160	SPACER, CARBURETOR	1							
3	1	160692-56900	ROD, CHOKE	1							
4	1	160496-57010	CARBURETOR COMPL.	1							
6	2	160493-56610	GASKET, FLOAT CHAMB.	1							
7	2	160493-56670	CHAMBER CMP.,FLOAT.	1							
8	2	160493-56720	VALVE, FLOAT	1							
9	2	160493-56620	FLOAT ASSY.	1							
10	2	160493-56630	PIN, FLOAT	1							
11	2	160496-57730	JET, MAIN	1							
12	2	160493-56730	GASKET, CHAMBER SET	1							
13	2	160493-56740	PLUG, CHAMBER SET	1							
14	2	160493-56850	FILTER, AIR	1							
15	2	160498-56640	SHAFT ASSY, THROTTLE	1							
16	2	160498-56540	VALVE, THROTTLE	1							
17	2	160493-56550	SCREW, VALVE SET	2							
18	2	160493-56660	SHAFT COMP.,CHOKE	1							
19	2	160492-56480	VALVE, CHOKE	1							
20	2	160493-56710	SPRING, ADJUST SCREW	1							
21	2	160493-56700	SCREW,THROTTLE ADJUS	1							
22	2	160493-56800	CAP, SEALING	1							
23	2	160699-56680	NEEDLE, IDLE ADJUST	1							
24	2	160699-56760	PLUG,SLOW JET	1							
25	2	160496-57740	JET,SLOW	1							
26	2	160496-57700	JET, AIR BLEED	1							
27	2	160492-56710	JET,SLOW AIR BLEED	1							
28	2	160496-57710	NOZZLE, MAIN	1							

Remarks
(REMARKS)"EFFECTIVE MACHINE NO." OF
ENGINE IS INDICATED ON THE
ENGINE LABEL WHICH IS SHOWN
IN FIG.10.

Fig.8. CARBURETOR

GA100E-SKF



OCNP4-G03900 8. CARBURETOR

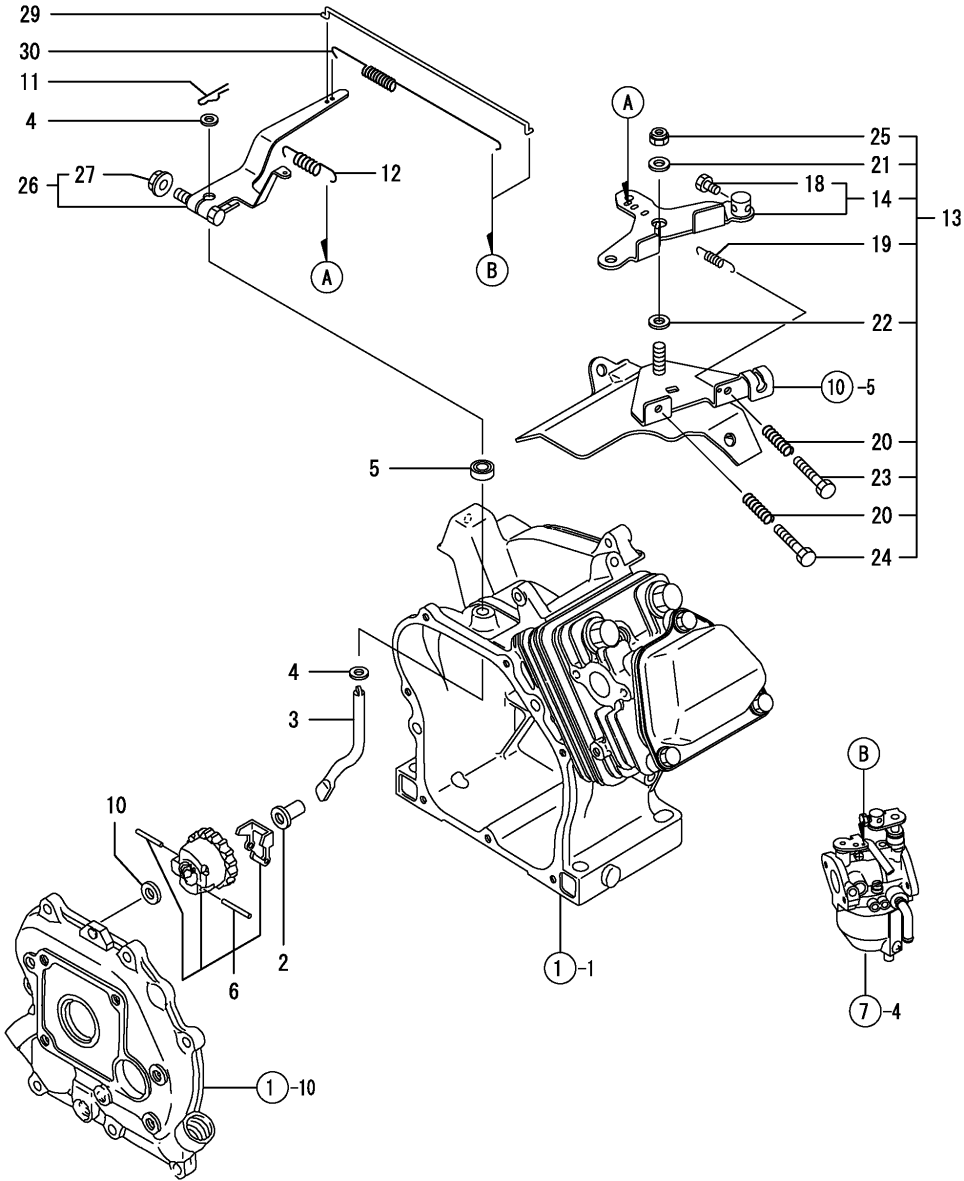
(A)=GA100E-SKG
(B)=GA100E-SKF
(C)=

(D)=
(E)=
(F)=

REF.	LEV.	PARTS NO.	DESCRIPTION	QTY						I	R
				(A)	(B)	(C)	(D)	(E)	(F)		
1	1	160667-56151	GASKET, CARBURETOR		2						
2	1	160667-56160	SPACER, CARBURETOR		1						
3	1	160492-56261	STAY, CHOKE		1						
4	1	160692-56900	ROD, CHOKE		1						
5	1	160496-57020	CARBURETOR COMPL.		1						
7	2	160493-56610	GASKET, FLOAT CHAMB.		1						
8	2	160493-56670	CHAMBER CMP.,FLOAT.		1						
9	2	160493-56720	VALVE, FLOAT		1						
10	2	160493-56620	FLOAT ASSY.		1						
11	2	160493-56630	PIN, FLOAT		1						
12	2	160496-57720	JET, MAIN		1						
13	2	160493-56730	GASKET, CHAMBER SET		1						
14	2	160493-56740	PLUG, CHAMBER SET		1						
15	2	160493-56850	FILTER, AIR		1						
16	2	160498-56640	SHAFT ASSY, THROTTLE		1						
17	2	160498-56540	VALVE, THROTTLE		1						
18	2	160493-56550	SCREW, VALVE SET		2						
19	2	160493-56660	SHAFT COMP.,CHOKE		1						
20	2	160492-56480	VALVE, CHOKE		1						
21	2	160493-56710	SPRING, ADJUST SCREW		1						
22	2	160493-56700	SCREW,THROTTLE ADJUS		1						
23	2	160493-56800	CAP, SEALING		1						
24	2	160699-56680	NEEDLE, IDLE ADJUST		1						
25	2	160699-56760	PLUG,SLOW JET		1						
26	2	160699-56730	JET,SLOW		1						
27	2	160492-56510	JET, AIR BLEED		1						
28	2	160492-56710	JET,SLOW AIR BLEED		1						
29	2	160492-56720	NOZZLE, MAIN		1						

Remarks
(REMARKS)"EFFECTIVE MACHINE NO." OF
ENGINE IS INDICATED ON THE
ENGINE LABEL WHICH IS SHOWN
IN FIG.10.

Fig.9. GOVERNOR & CONTROL DEVICE



0CNP4-G03900 9. GOVERNOR & CONTROL DEVICE

(A)=GA100E-SKG

(B)=GA100E-SKF

(C)=

(D)=

(E)=

(F)=

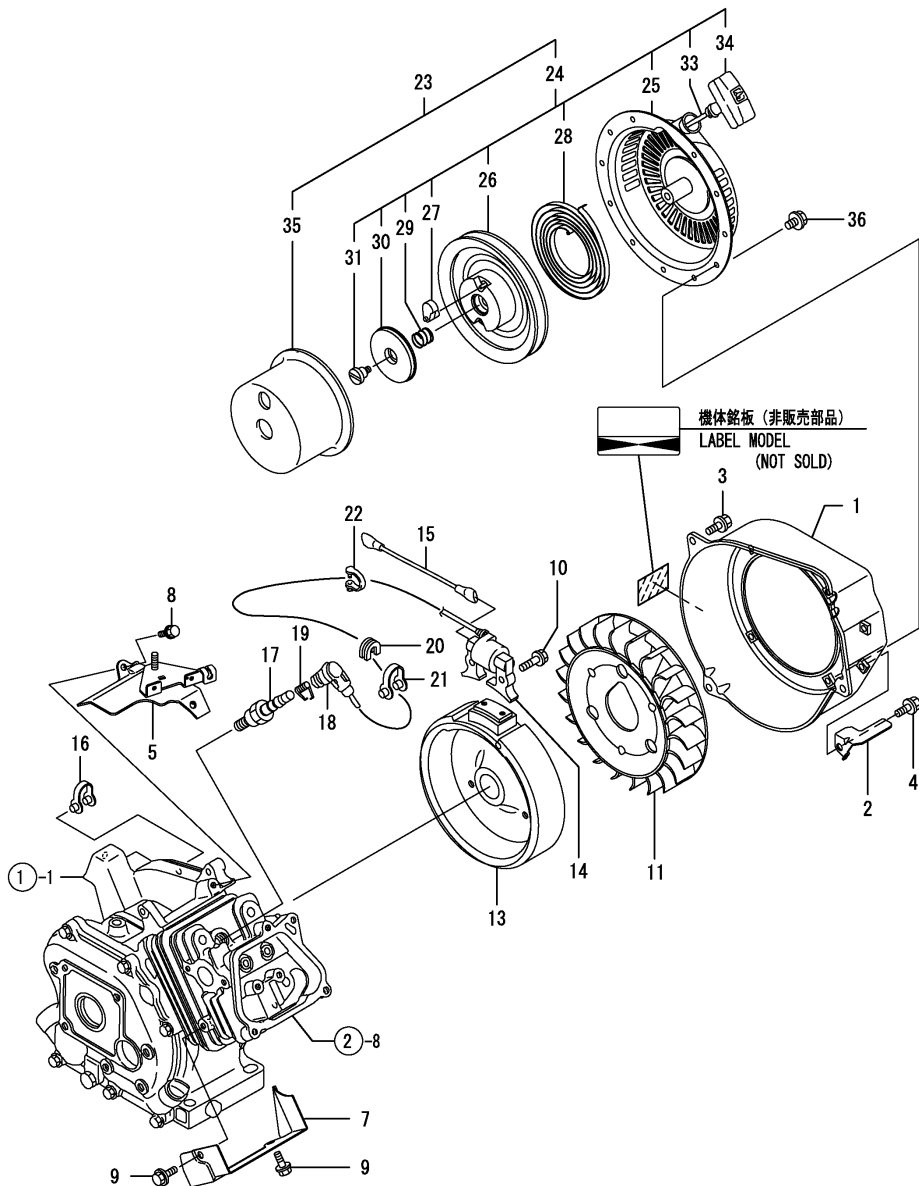
REF.	LEV.	PARTS NO.	DESCRIPTION	QTY						I	R
				(A)	(B)	(C)	(D)	(E)	(F)		
2	1	160690-61301	SPINDLE, GOVERNOR	1	1						
3	1	160690-61311	SHAFT, GOV. LEVER	1	1						
4	1	160690-61450	WASHER	2	2						
5	1	114770-61600	SEAL, OIL	1	1						
6	1	160690-61600	GEAR ASSY, GOV.	1	1						
10	1	160120-76940	WASHER	1	1						
11	1	22372-080000	SNAP PIN (JASO 8)	1	1						
12	1	160490-66020	SPRING	1	1						
13	1	160492-66120	CONTROL ASSY	1	1						
14	2	160692-66051	LEVER ASSY, CONTROL	1	1						
18	3	26117-040088	BOLT M 4X 8 PLATED	1	1						
19	2	160664-66220	SPRING, RETURN	1	1						
20	2	160520-66291	SPRING	2	2						
21	2	160670-66350	COLLAR	1	1						
22	2	160120-76940	WASHER	1	1						
23	2	26117-040257	BOLT M 4X 25	1	1						
24	2	26117-040357	BOLT M 4X 35	1	1						
25	2	26347-060002	U-NUT M 6	1	1						
26	1	160490-66190	LEVER, GOVERNOR	1	1						
27	2	26366-060002	NUT M 6	1	1						
29	1	160490-66200	LINK, THROTTLE	1	1						
30	1	160798-66210	SPRING, TENSION	1	1						

Remarks
 (REMARKS)"EFFECTIVE MACHINE NO." OF
 ENGINE IS INDICATED ON THE
 ENGINE LABEL WHICH IS SHOWN
 IN FIG.10.

Fig.10. FLYWHEEL MAG.& STARTING DEVICE

(A)=GA100E-SKG
(B)=GA100E-SKF
(C)=

(D)=
(E)=
(F)=



REF.	LEV.	PARTS NO.	DESCRIPTION	QTY						I	R
				(A)	(B)	(C)	(D)	(E)	(F)		
1	1	160490-45140	CASE, FAN (WHITE:14)	1	1						
2	1	160490-45240	GUIDE, COOLING AIR	1	1						
3	1	26476-060142	BOLT M 6X 14, TAPPING	3	3						
4	1	26476-060142	BOLT M 6X 14, TAPPING	1	1						
5	1	160490-45220	HEAD, CYLINDER	1	1						
7	1	160490-45230	COVER, CYLINDER	1	1						
8	1	26476-060142	BOLT M 6X 14, TAPPING	2	2						
9	1	26476-060142	BOLT M 6X 14, TAPPING	2	2						
10	1	160690-04350	BOLT M6X30	2	2						
11	1	160490-45010	FAN, COOLING	1	1						
13	1	160490-78540	ROTOR	1	1						
14	1	160490-78550	COIL, LIGHTING	1	1						
15	1	160490-78230	CORD, STOP	1	1						
16	1	29610-000650	CLAMP, SPEED 065	2	2						
17	1	160793-78010	PLUG, SPARK	1	1						
18	1	160700-78040	CAP, PLUG	1	1						
19	1	160700-78050	TERMINAL, PLUG	1	1						
20	1	160700-78720	GROMMET	1	1						
21	1	29610-000950	CLAMP, SPEED 095	1	1						
22	1	29610-001400	CLAMP	1	1						
23	1	160490-76070	STARTER ASSY, RECOIL	1	1						
24	2	160490-76290	RECOIL ASSY, STARTER	1	1						
25	3	160498-76730	CASE ASSY, STARTER	1	1						
26	3	160498-76740	REEL	1	1						
27	3	160498-76640	RATCHET	2	2						
28	3	160498-76750	SPRING, SPIRAL	1	1						
29	3	160690-76561	SPRING, FRICTION	1	1						
30	3	160498-76670	GUIDE, RATCHET	1	1						
31	3	160698-76580	SETScrew	1	1						
33	3	160498-76770	ROPE, STARTER	1	1						
34	3	160690-76670	KNOB, STARTER	1	1						
35	2	160490-76651	PULLEY, STARTER	1	1						
36	1	26106-060082	BOLT M 6X 8 PLATED	4	4						

Remarks
(REMARKS)"EFFECTIVE MACHINE NO." OF
ENGINE IS INDICATED ON THE
ENGINE LABEL WHICH IS SHOWN
IN FIG.10.

Part Number Index

All parts are stipulated in the order of part numbers.

(Depending on the area in which the part is used.)

This index will display the location of the part according to each part number.

PARTS No. INDEX

PARTS No.	Fig.	Ref.No.
106990-44660	6	22
114250-12300	4	11
114250-21290	5	5
114252-13950	4	4
114270-01600	1	5
114770-61600	9	5
119520-03990	6	25
160120-76940	9	10
		22
160260-59900	6	26
160393-55050	6	10
160490-01760	1	21
160490-11010	2	8
160490-11120	2	15
160490-11290	2	21
160490-11300	2	22
160490-11311	2	23
160490-14200	5	12
160490-14400	5	13
160490-22300	5	28
160490-23030	5	30
160490-45010	10	11
160490-45140	10	1
160490-45220	10	5
160490-45230	10	7
160490-45240	10	2
160490-66020	9	12
160490-66190	9	26
160490-66200	9	29
160490-76070	10	23
160490-76290	10	24
160490-76651	10	35
160490-78230	10	15
160490-78540	10	13
160490-78550	10	14
160492-04310	4	7
160492-12610	4	20
160492-12630	4	22
160492-12651	4	19
160492-12670	4	21
160492-12752	4	18
160492-12941	4	23
160492-56261	8	3
160492-56480	7	19
	8	20
160492-56510	8	27
160492-56710	7	27
	8	28
160492-56720	8	29
160492-66120	9	13

PARTS No.	Fig.	Ref.No.
160493-56550	7	17
	8	18
160493-56610	7	6
	8	7
160493-56620	7	9
	8	10
160493-56630	7	10
	8	11
160493-56660	7	18
	8	19
160493-56670	7	7
	8	8
160493-56700	7	21
	8	22
160493-56710	7	20
	8	21
160493-56720	7	8
	8	9
160493-56730	7	12
	8	13
160493-56740	7	13
	8	14
160493-56800	7	22
	8	23
160493-56850	7	14
	8	15
160496-07490	3	7
160496-22010	5	22
160496-56800	4	17
160496-57010	7	4
160496-57020	8	5
160496-57700	7	26
160496-57710	7	28
160496-57720	8	12
160496-57730	7	11
160496-57740	7	25
160498-01330	2	5
160498-12050	4	13
160498-12500	4	12
160498-13620	4	2
160498-13690	4	3
160498-14051	5	1
160498-56540	7	16
	8	17
160498-56640	7	15
	8	16
160498-76640	10	27
160498-76670	10	30
160498-76730	10	25
160498-76740	10	26

PARTS No.	Fig.	Ref.No.
160498-76750	10	28
160498-76770	10	33
160510-02220	1	8
		15
160510-03180	2	3
160510-13201	4	1
160520-03050	2	1
160520-66291	9	20
160530-21200	5	19
160590-21210	5	20
160593-03180	2	4
160610-03050	2	2
160610-04201	2	6
160610-04620	2	7
160610-12530	4	14
160610-12540	4	15
160610-12550	4	16
160610-21290	5	18
160610-55100	6	11
160611-01741	1	19
160611-14560	5	11
160664-07370	3	5
160664-11100	2	13
160664-11110	2	14
160664-11180	2	16
160664-66220	9	19
160667-56151	7	1
	8	1
160667-56160	7	2
	8	2
160670-66350	9	21
160690-04350	10	10
160690-07260	3	3
160690-11222	2	18
160690-11271	2	19
160690-11280	2	20
160690-55150	6	3
160690-59400	6	27
160690-61301	9	2
160690-61311	9	3
160690-61450	9	4
160690-61600	9	6
160690-76561	10	29
160690-76670	10	34
160692-07370	3	6
160692-55300	6	13
160692-56900	7	3
	8	4
160692-66051	9	14
160698-76580	10	31

PARTS No.	Fig.	Ref.No.
160699-11200	2	17
160699-56680	7	23
	8	24
160699-56730	8	26
160699-56760	7	24
	8	25
160700-78040	10	18
160700-78050	10	19
160700-78720	10	20
160708-55150	6	12
160710-55360	6	16
160710-55370	6	17
160710-55382	6	18
160710-55390	6	19
160730-59371	6	23
160763-12600	4	8
160790-04600	4	10
160793-78010	10	17
160798-66210	9	30
160820-59391	6	24
160991-07260	3	4
760490-01500	1	10
760496-01560	1	1
760496-22500	5	24
760498-21700	5	14
760498-55720	6	1



YANMAR CO.,LTD.

CONTENTS

MODEL : TE35
PC NO : 0CNP4-G04000

Fig.No. GROUP NAME

PULLEY & TENSION SEC

1. ENGINE MOUNTING
2. ENGINE PULLEY & MAIN PULLEY
3. TENSION CLUTCH

TRANSMISSION UNIT

4. TRANSMISSION CASE
5. MAIN SHAFT
6. COUNTER SHAFT
7. SPEED REDUCTION SHAFT
8. AXLE
9. CHANGE

WHEEL SECTION

10. FENDER

HANDLE SECTION

11. HANDLE COLUMN
12. HANDLE
13. HANDLE COVER
14. CONTROL LEVER

ENGINE FRAME SECTION

15. ENGINE FRAME
16. HITCH
17. BELT COVER
18. BONNET
19. SKID
20. UNIVERSAL HITCH
21. SKID

Fig.No. GROUP NAME

22. UNIVERSAL HITCH

LABELS & ACCESSORIES

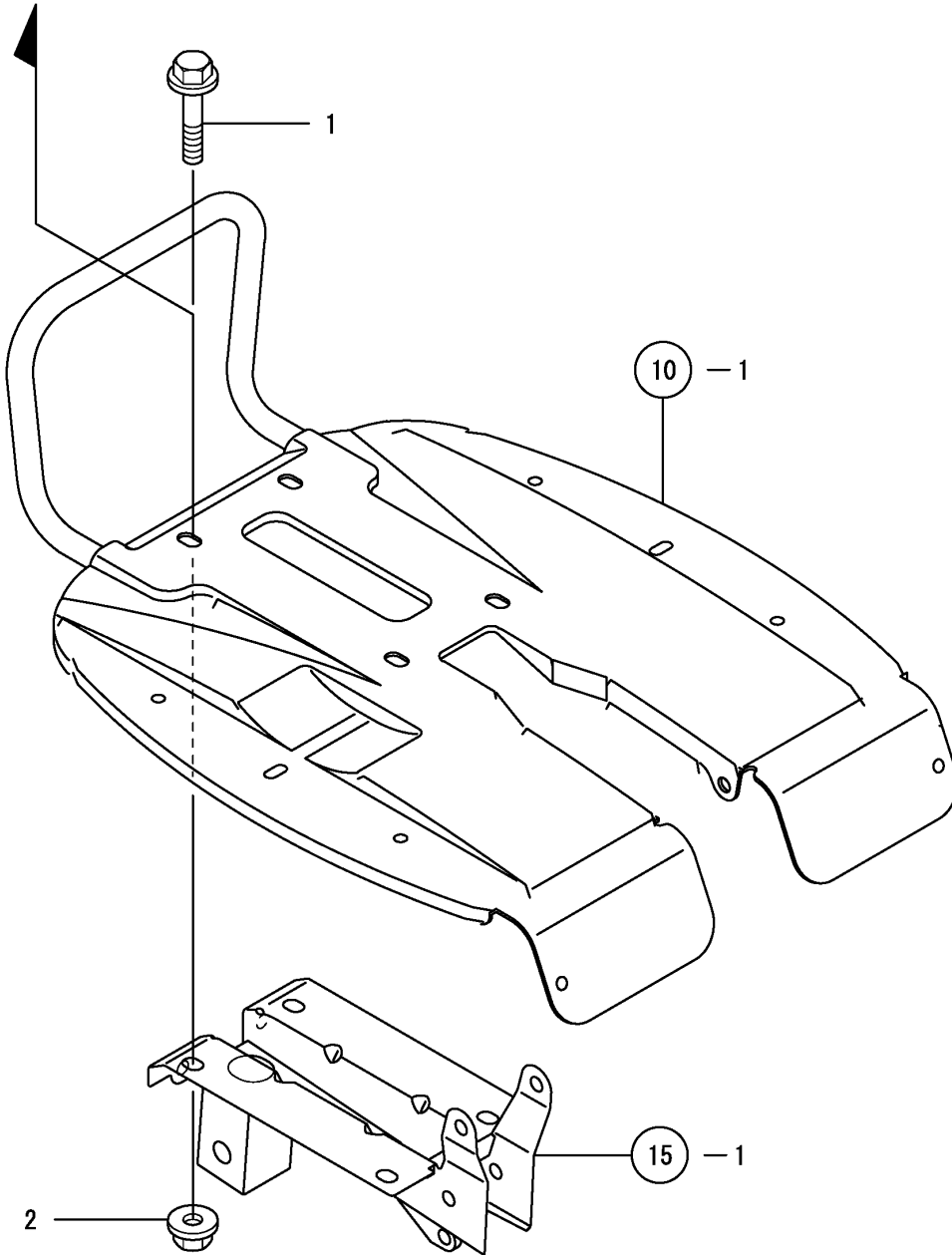
23. ELECTRICAL PARTS
24. LABELS
25. TOOLS & ACCESSORIES
26. AXLE ROTOR

Fig.1. ENGINE MOUNTING

(A)=TE35
(B)=TE35D
(C)=

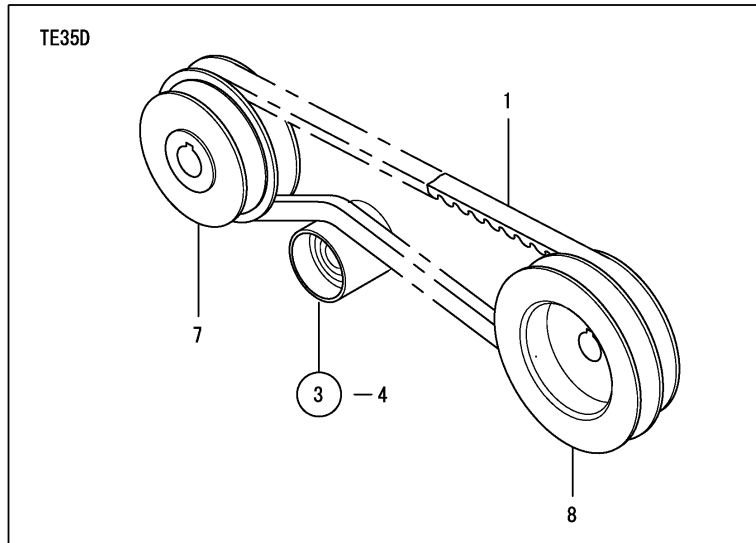
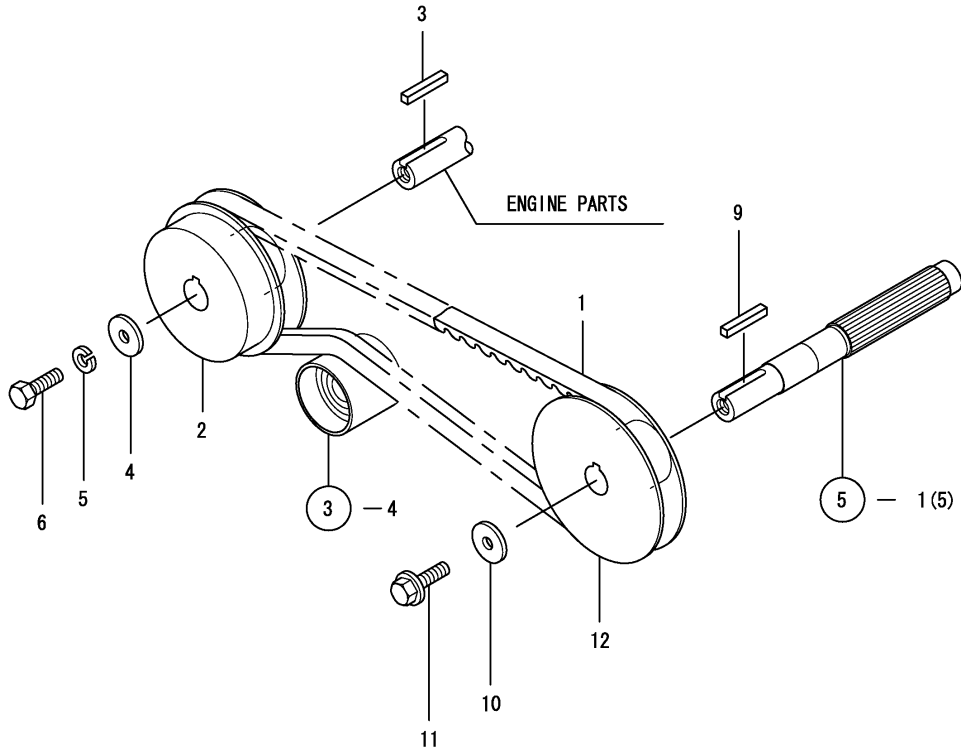
(D)=
(E)=
(F)=

TO ENGINE



REF.	LEV.	PARTS NO.	DESCRIPTION	QTY						I	R
				(A)	(B)	(C)	(D)	(E)	(F)		
1	1	26107-080352	BOLT M 8X 35 PLATED	4	4						
2	1	26367-080002	U-NUT M 8	4	4						

Fig.2. ENGINE PULLEY & MAIN PULLEY



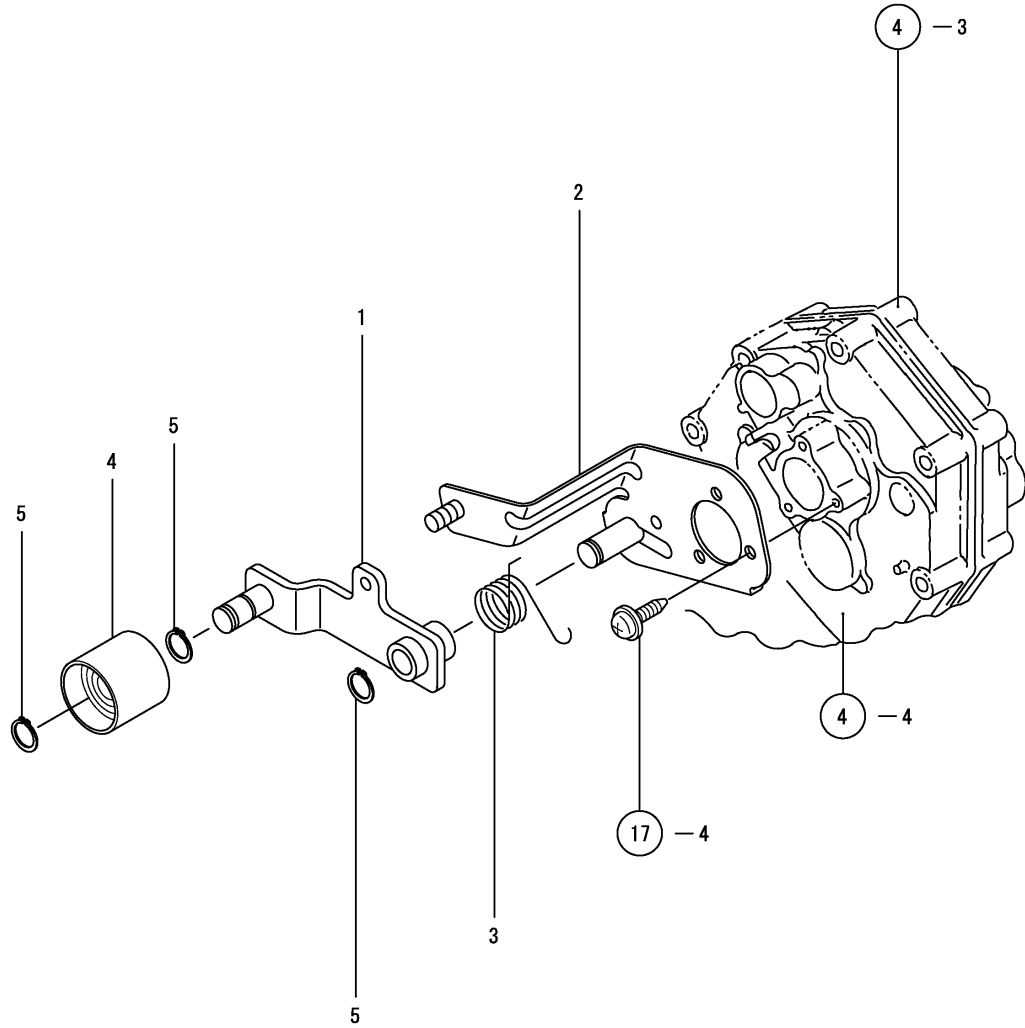
OCNP4-G04000 2. ENGINE PULLEY & MAIN PULLEY

(A)=TE35
(B)=TE35D
(C)=

(D)=
(E)=
(F)=

REF.	LEV.	PARTS NO.	DESCRIPTION	Q'TY						I	R
				(A)	(B)	(C)	(D)	(E)	(F)		
1	1	1A2550-12100	V-BELT A25	1	1						
2	1	1A2550-12160	V-PULLEY 74A	1							
3	1	1D1630-51050	KEY 4X25	1	1						
4	1	22157-060000	WASHER 6	1	1						
5	1	22217-060000	SPRING WASHER 6	1	1						
6	1	26117-060162	BOLT M 6X 16 PLATED	1	1						
7	1	1A2550-12150	V-PULLEY 65X74A		1						
8	1	1A2550-13350	V-PULLEY 80.5X90A		1						
9	1	1D1630-51050	KEY 4X25	1	1						
10	1	22157-060000	WASHER 6	1	1						
11	1	26107-060122	BOLT M 6X 12 PLATED	1	1						
12	1	1A2550-13360	V-PULLEY 80.5A	1							

Fig.3. TENSION CLUTCH



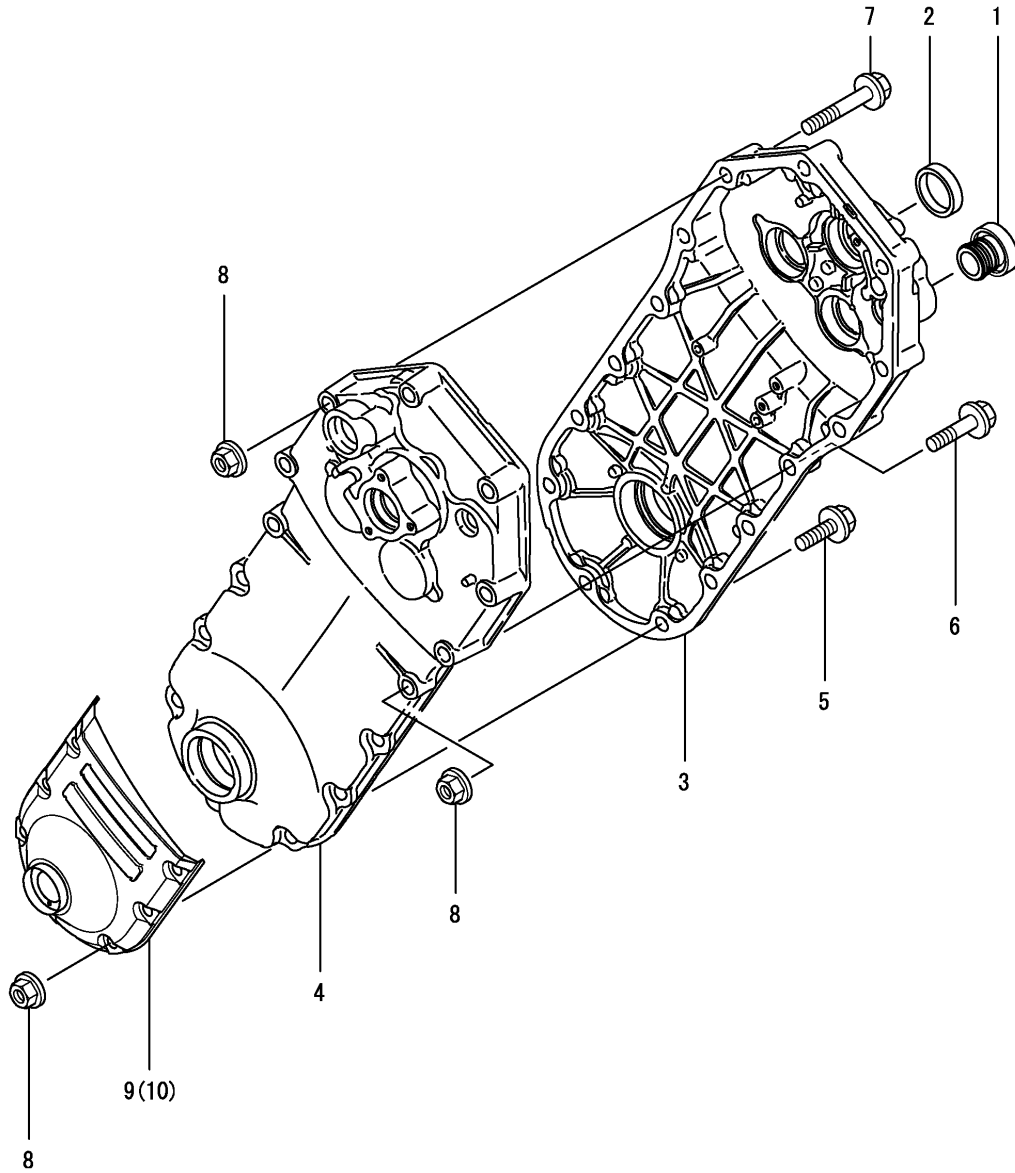
0CNP4-G04000 3. TENSION CLUTCH

(A)=TE35
(B)=TE35D
(C)=

(D)=
(E)=
(F)=

REF.	LEV.	PARTS NO.	DESCRIPTION	Q'TY						I	R
				(A)	(B)	(C)	(D)	(E)	(F)		
1	1	1A2490-13100	ARM COMPL,TENSION	1	1						
2	1	1A2490-13150		1	1						
3	1	1A2490-13400	SPRING,TENSN RETURN	1	1						
4	1	1A2550-13650	ROLLER CMP,TENSION	1	1						
5	1	22242-000120	CIRCLIP 12	3	3						

Fig.4. TRANSMISSION CASE



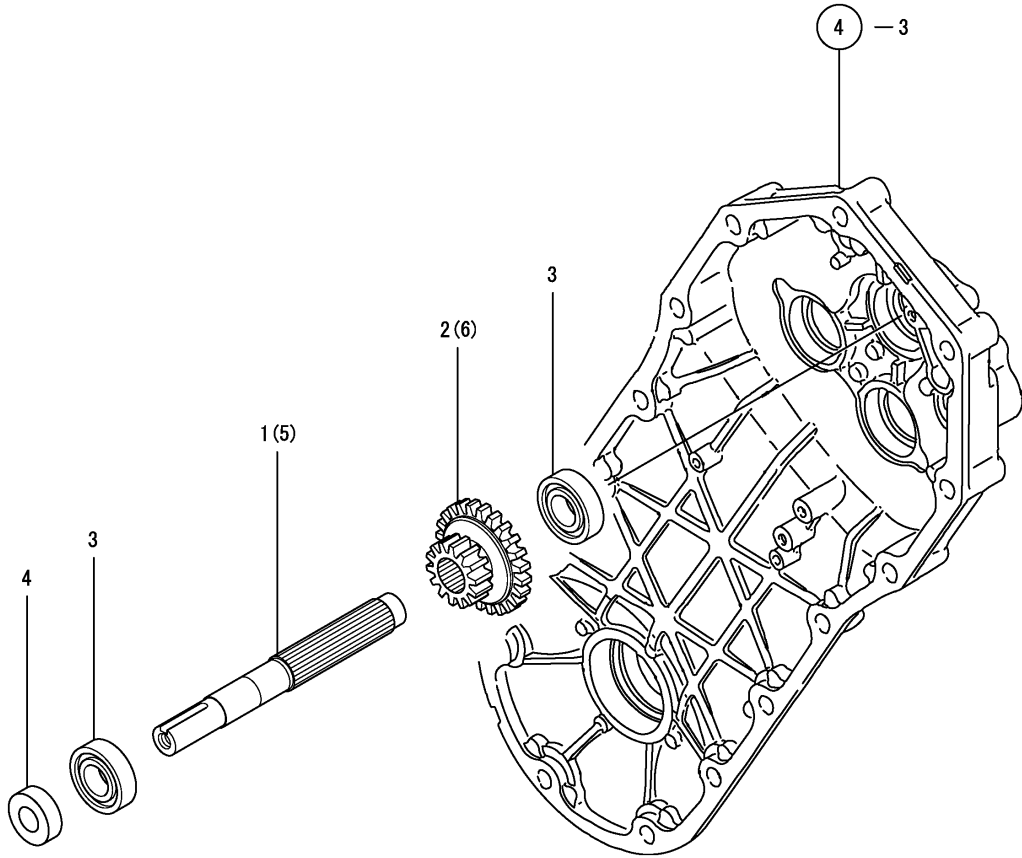
0CNP4-G04000 4. TRANSMISSION CASE

(A)=TE35
(B)=TE35D
(C)=

(D)=
(E)=
(F)=

REF.	LEV.	PARTS NO.	DESCRIPTION	QTY						I	R
				(A)	(B)	(C)	(D)	(E)	(F)		
1	1	1A1470-20090	CAP 35,OIL FILLER	1	1						
2	1	1A1750-20410	CAP 30X5,SEAL	1	1						
3	1	1A2190-21010	CASE R,TRANSMISSION	1	1						
4	1	1A2190-21020	CASE, MISSION	1	1						
5	1	26107-080252	BOLT M 8X 25 PLATED	6	6						
6	1	26107-080452	BOLT M 8X 45 PLATED	1	1						
7	1	26107-080652	BOLT M8X65,COLLAR HD	1	1						
8	1	26367-080002	U-NUT M 8	8	8						
9	1	1A1860-20440	COVER L COMPL			1					
10	1	1A1860-20450	COVER R COMPL			1					

Fig.5. MAIN SHAFT



OCNP4-G04000 5. MAIN SHAFT

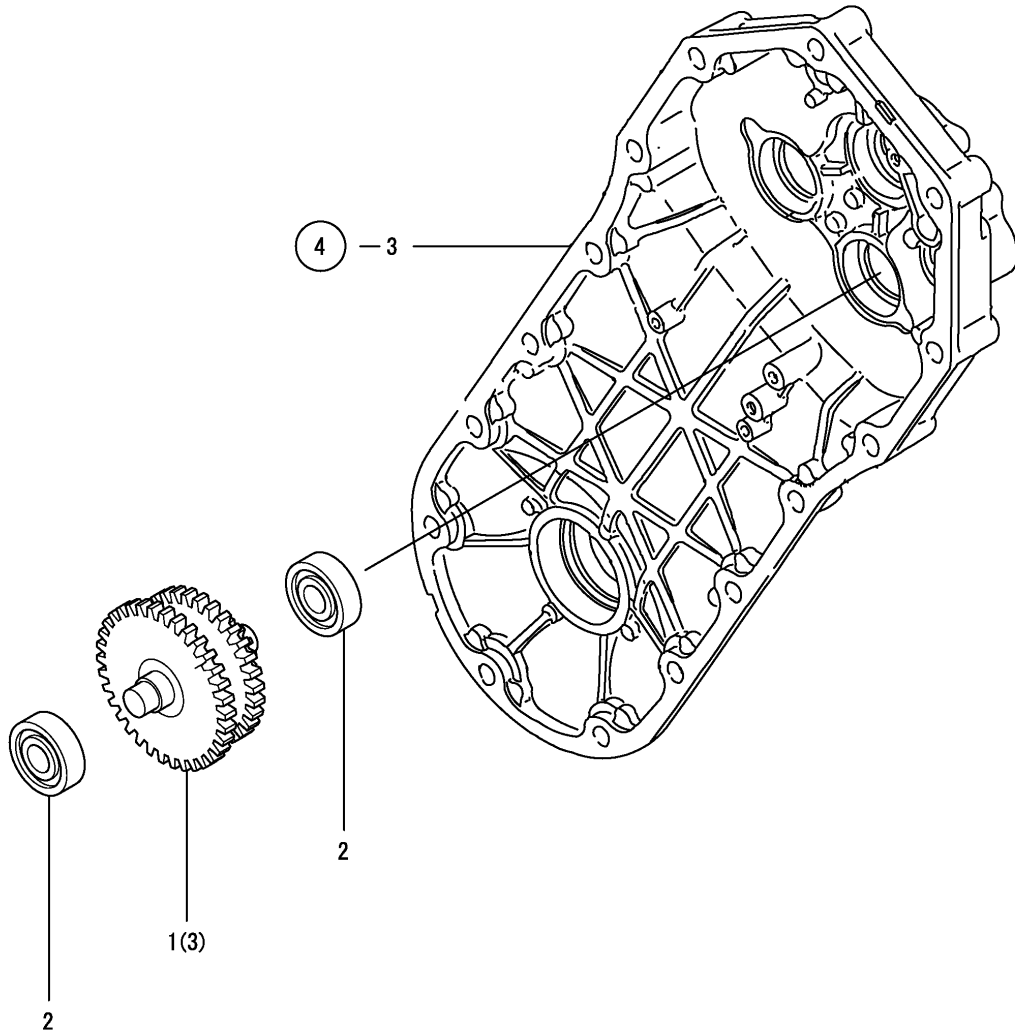
(A)=TE35
(B)=TE35D
(C)=

(D)=
(E)=
(F)=

REF.	LEV.	PARTS NO.	DESCRIPTION	Q'TY						I	R	
				(A)	(B)	(C)	(D)	(E)	(F)			
1	1	1A2190-23010		1	1						1	
2	1	1A2550-23010	GEAR 13X24	1	1						1	
3	1	24101-060024	BALL BEARING	2	2							
4	1	24421-152507	SEAL TC15 25 07, OIL	1	1							
5	1	1A2491-23000	SHAFT,MAIN	1	1							
6	1	1A2551-23010	GEAR 13X24	1	1							

Remarks
(I)TE35J,35DJ

Fig.6. COUNTER SHAFT



0CNP4-G04000 6. COUNTER SHAFT

(A)=TE35
(B)=TE35D
(C)=

(D)=
(E)=
(F)=

REF.	LEV.	PARTS NO.	DESCRIPTION	Q'TY						I	R
				(A)	(B)	(C)	(D)	(E)	(F)		
1	1	1A2550-23100	SHAFT CMP,COUNTER	1	1						1
2	1	24101-062014	BALL BEARING	2	2						
3	1	1A2551-23100	SHAFT CMP,COUNTER	1	1						

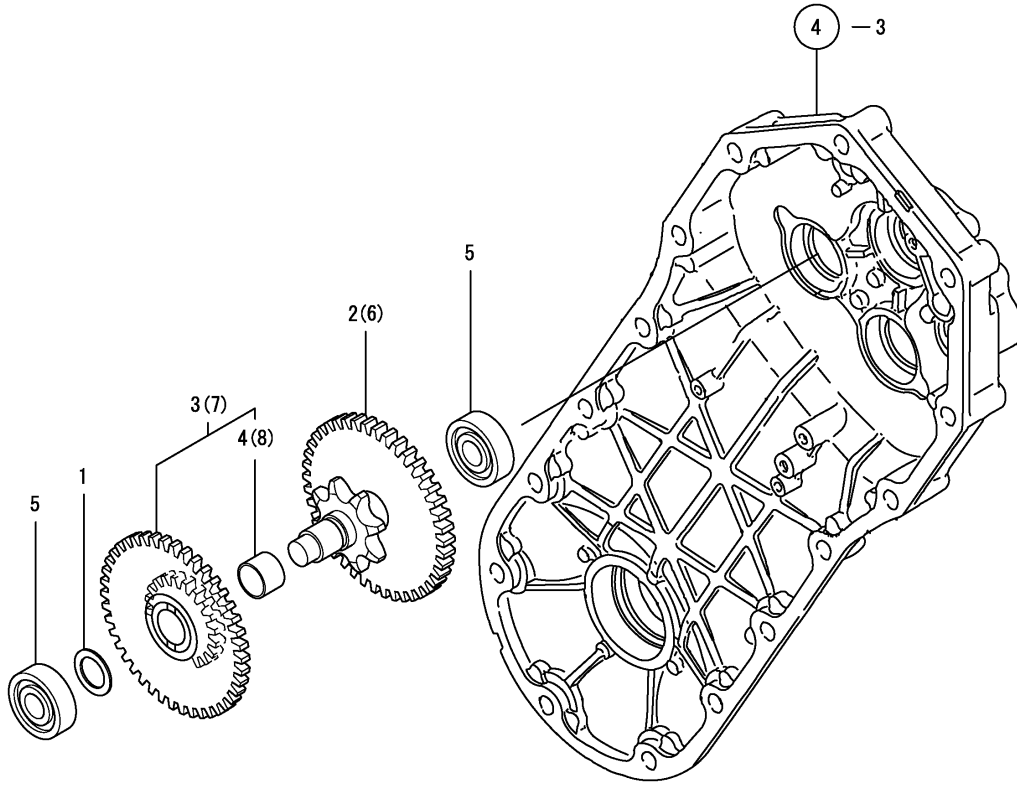
Remarks
(1)TE35J,35DJ

Fig.7. SPEED REDUCTION SHAFT

OCNP4-G04000 7. SPEED REDUCTION SHAFT

(A)=TE35
(B)=TE35D
(C)=

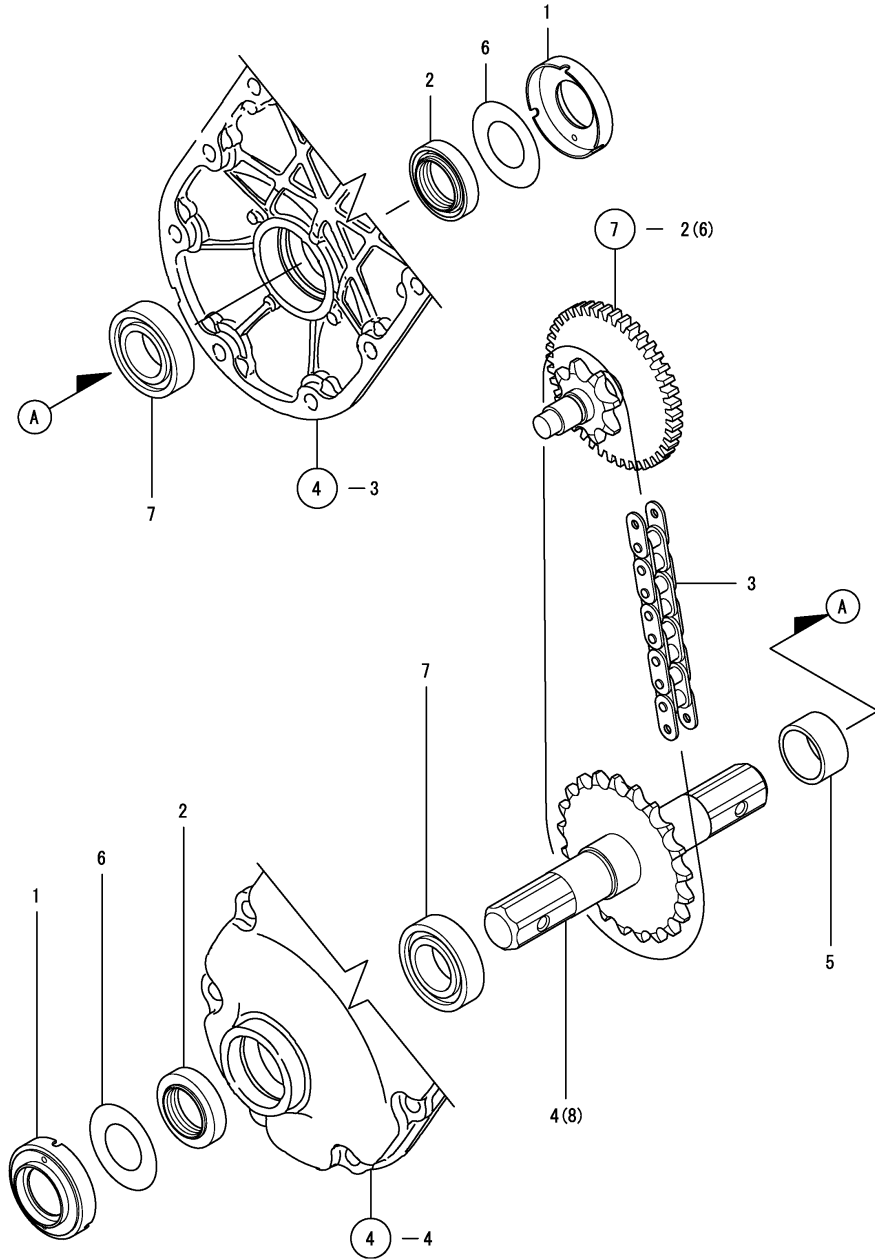
(D)=
(E)=
(F)=



REF.	LEV.	PARTS NO.	DESCRIPTION	Q'TY						I	R
				(A)	(B)	(C)	(D)	(E)	(F)		
1	1	1A1860-20280	SHIM 15.22.1.0	2	2						
2	1	1A2550-23400	SHAFT CMP,FINAL	1	1						1
3	1	1A2550-23430	GEAR 20X42	1	1						1
4	2	24550-015120	BUSH 15X12	1	1						1
5	1	24101-062014	BALL BEARING	2	2						
6	1	1A2551-23400	SHAFT CMP,FINAL	1	1						
7	1	1A2551-23430	GEAR 20X42	1	1						
8	2	24550-015120	BUSH 15X12	1	1						

Remarks
(1)TE35J,35DJ

Fig.8. AXLE



0CNP4-G04000 8. AXLE

(A)=TE35
(B)=TE35D
(C)=

(D)=
(E)=
(F)=

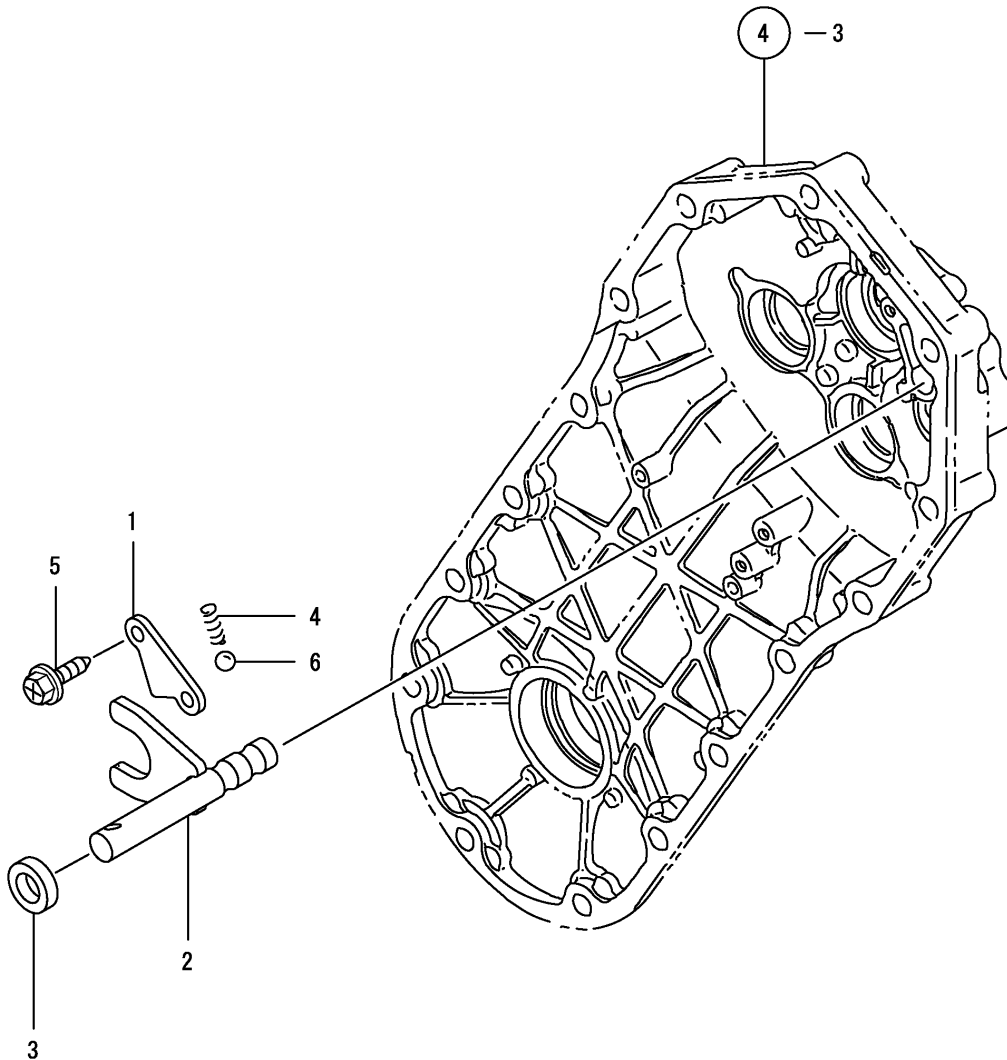
REF.	LEV.	PARTS NO.	DESCRIPTION	Q'TY						I	R
				(A)	(B)	(C)	(D)	(E)	(F)		
1	1	1A2550-20400	COVER,AXLE BOSS	2							
2	1	1A1860-20491	OIL SEAL 25.40	2	2						
3	1	1A2550-23470	CHAIN 12.7X56,ROLLER	1	1						
4	1	1A2550-24000	AXLE CMP	1	1						1
5	1	1A2550-24050	COLLAR 27X32X16.4	1	1						
6	1	1A2550-24100	WASHER	2	2						
7	1	24101-060054	BALL BEARING 6005	2	2						
8	1	1A2551-24000	AXLE CMP	1	1						

Remarks
(1)TE35J,35DJ

Fig.9. CHANGE

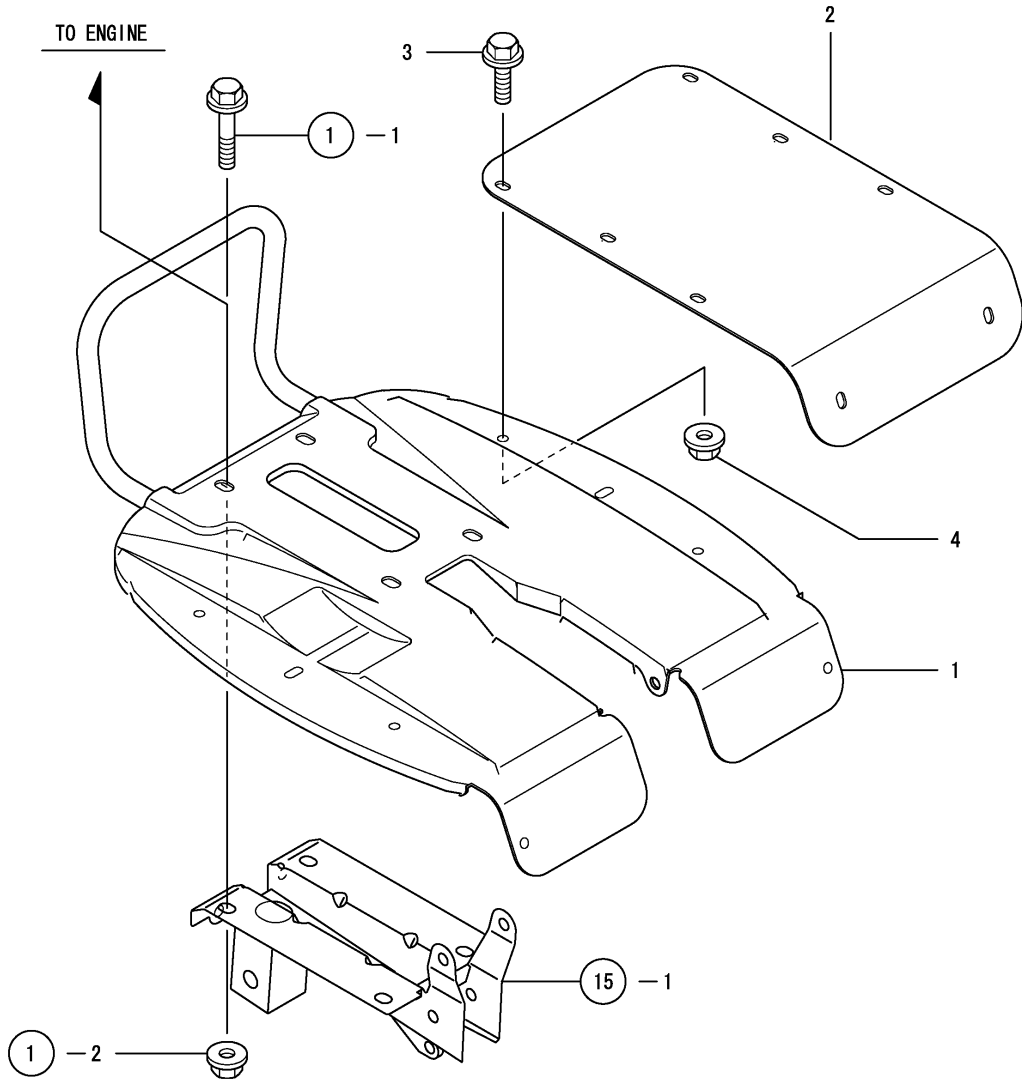
(A)=TE35
(B)=TE35D
(C)=

(D)=
(E)=
(F)=



REF.	LEV.	PARTS NO.	DESCRIPTION	QTY						I	R
				(A)	(B)	(C)	(D)	(E)	(F)		
1	1	1A1750-21350	KEEP PLATE,BALL	1	1						
2	1	1A2550-27000	FORK CMP,CHANGE	1	1						
3	1	1A1104-28230	OIL SEAL 12184	1	1						
4	1	1E6150-56040	SPRING	1	1						
5	1	1A1750-90200	SCREW 6X12,COLLAR HD	2	2						
6	1	24190-100001	BALL 5/16, STEEL	1	1						

Fig.10. FENDER



0CNP4-G04000 10. FENDER

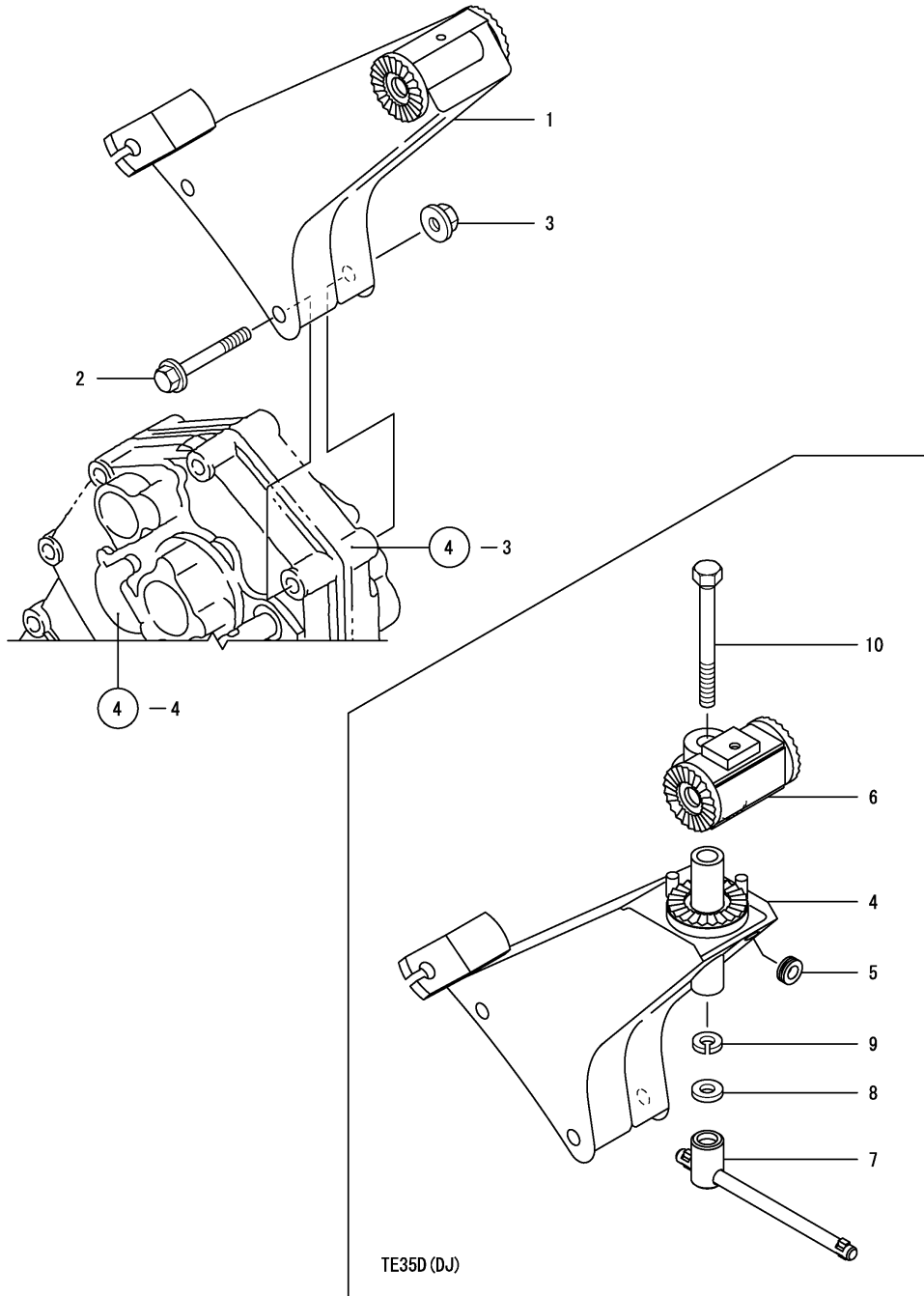
(A)=TE35
(B)=TE35D
(C)=

(D)=
(E)=
(F)=

REF.	LEV.	PARTS NO.	DESCRIPTION	QTY						I	R
				(A)	(B)	(C)	(D)	(E)	(F)		
1	1	1A2550-32000	FENDER CMP	1	1						
2	1	1A2550-32100	FENDER,EXTENSION	2	2						
3	1	26107-060102	BOLT M 6X 10 PLATED	8	8						
4	1	26367-060002	NUT M 6	8	8						

N:Old $\frac{Yes}{No}$ New, Q:Old $\frac{No}{Yes}$ New, R:Old $\frac{Yes}{Yes}$ New, S:Old $\frac{No}{No}$ New, W:Add, Z:Discontinued, F:Interchangeable by set, K:Q'ty Change
(C)Copy Rights YANMAR CO.,LTD.

Fig.11. HANDLE COLUMN



0CNP4-G04000 11. HANDLE COLUMN

(A)=TE35
(B)=TE35D
(C)=

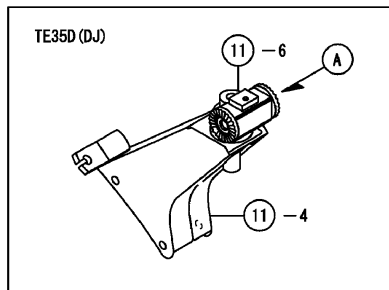
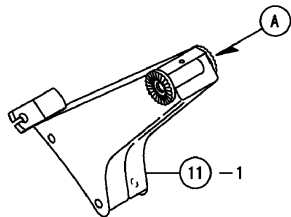
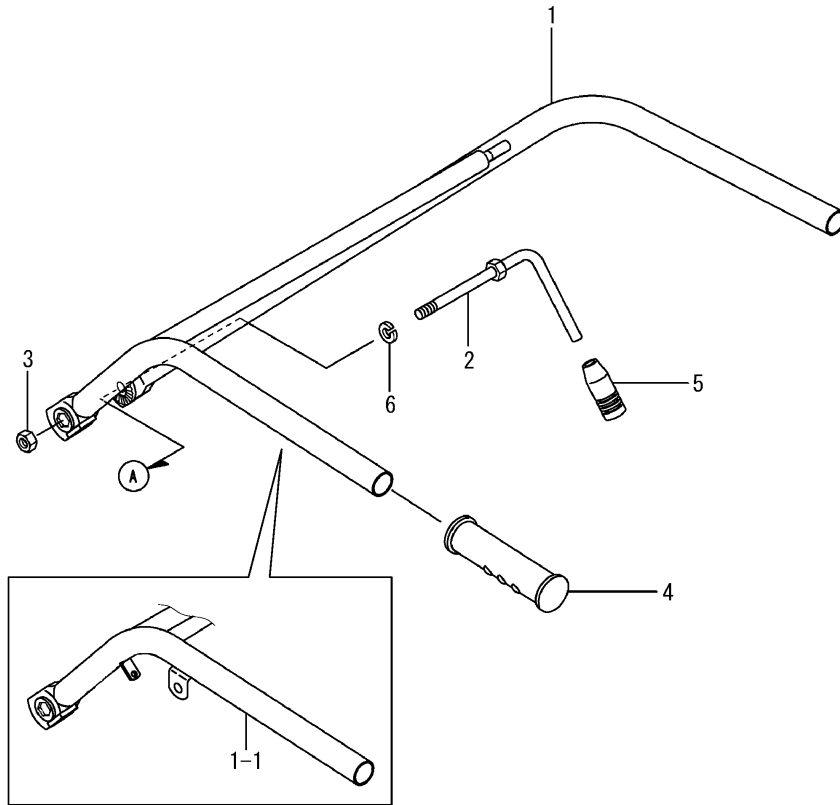
(D)=
(E)=
(F)=

REF.	LEV.	PARTS NO.	DESCRIPTION	Q'TY						I	R
				(A)	(B)	(C)	(D)	(E)	(F)		
1	1	1A2490-51000	FRAME COMP., HANDLE	1							
2	1	26107-080602	BOLT M 8X 60 PLATED	2	2						
3	1	26367-080002	U-NUT M 8	2	2						
4	1	1A2490-51200	FRAME COMP., HANDLE		1						
5	1	1A2490-51250	GROMMET		1						
6	1	1A2490-51300	STAY		1						
7	1	1A2550-51700	LEVER ASSY		1						
8	1	22117-100000	WASHER 10		1						
9	1	22217-100000	SPRING WASHER 10		1						
10	1	26157-101002	BOLT M10X100 PLATED		1						

Fig.12. HANDLE

(A)=TE35
(B)=TE35D
(C)=

(D)=
(E)=
(F)=

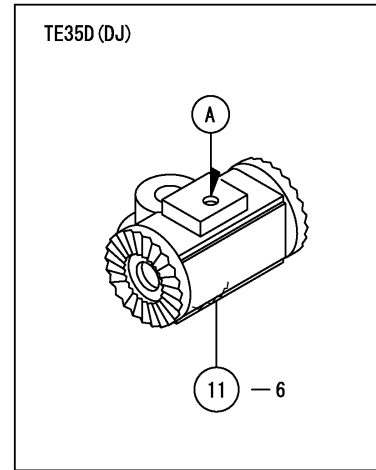
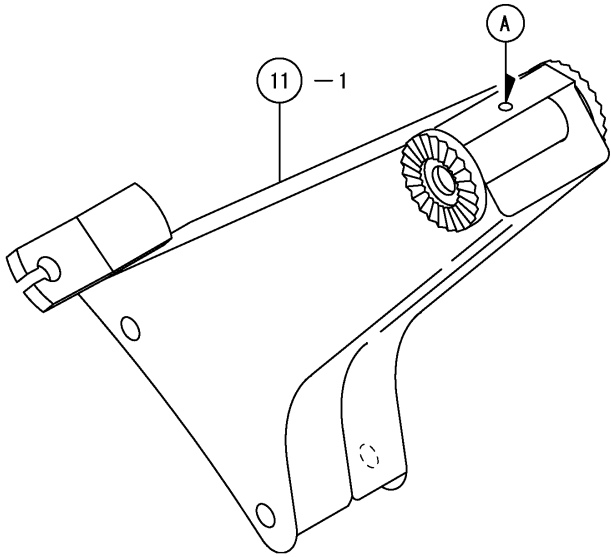
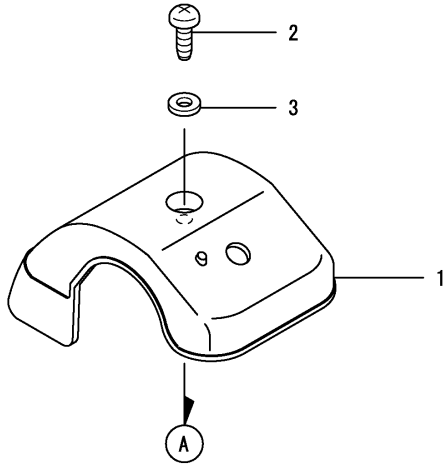


REF.	LEV.	PARTS NO.	DESCRIPTION	Q'TY						I	R
				(A)	(B)	(C)	(D)	(E)	(F)		
1	1	1A2550-51600	HANDLE CMP	1	1						
1-1	1	1A2550-51800	HANDLE CMP	1	1						S
		(A=F001212) (B=F001212)									
2	1	1A2490-51800	LEVER, LOCK		1	1					
3	1	1A2490-51850	NUT,M10		1	1					
4	1	192040-56220	GRIP,HANDLE		2	2					
5	1	1E6570-65750	GRIP,CONT.LEVER BLK.		1	1					
5-1	1	1E6570-65751	GRIP,CONTROL LEVER		1	1					R
		(A=FXXXXX) (B=FXXXXX)									
6	1	22287-100000	WASHER 10		1	1					

Fig.13. HANDLE COVER

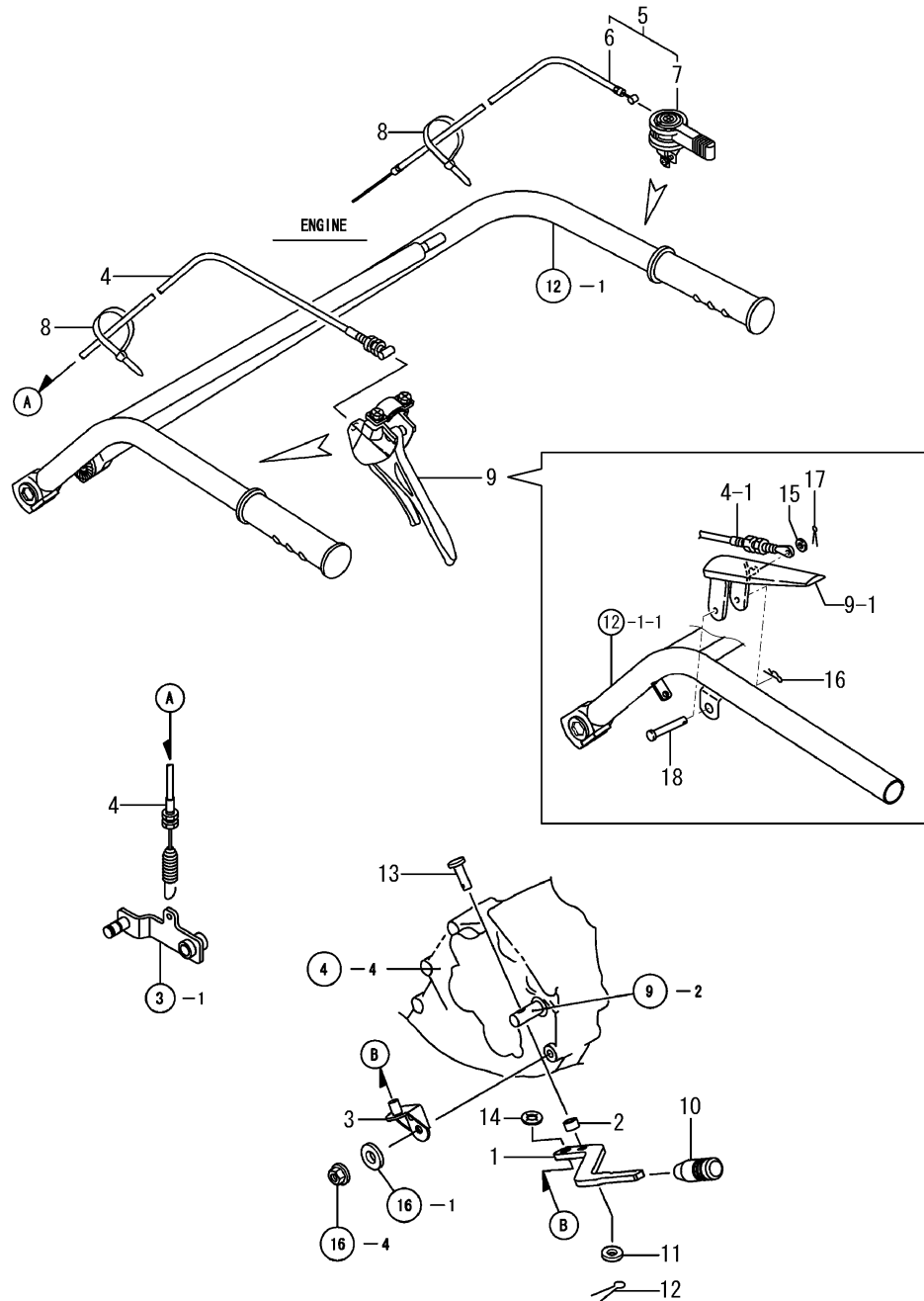
(A)=TE35
(B)=TE35D
(C)=

(D)=
(E)=
(F)=



REF.	LEV.	PARTS NO.	DESCRIPTION	Q'TY						I	R	
				(A)	(B)	(C)	(D)	(E)	(F)			
1	1	1A2490-51400	COVER,HANDLE FRAME	1	1							
2	1	1A1750-90060	SCREW 5X16,TAPPING	1	1							
3	1	1A1750-90150	WASHER 5,PLAIN	1	1							

Fig.14. CONTROL LEVER

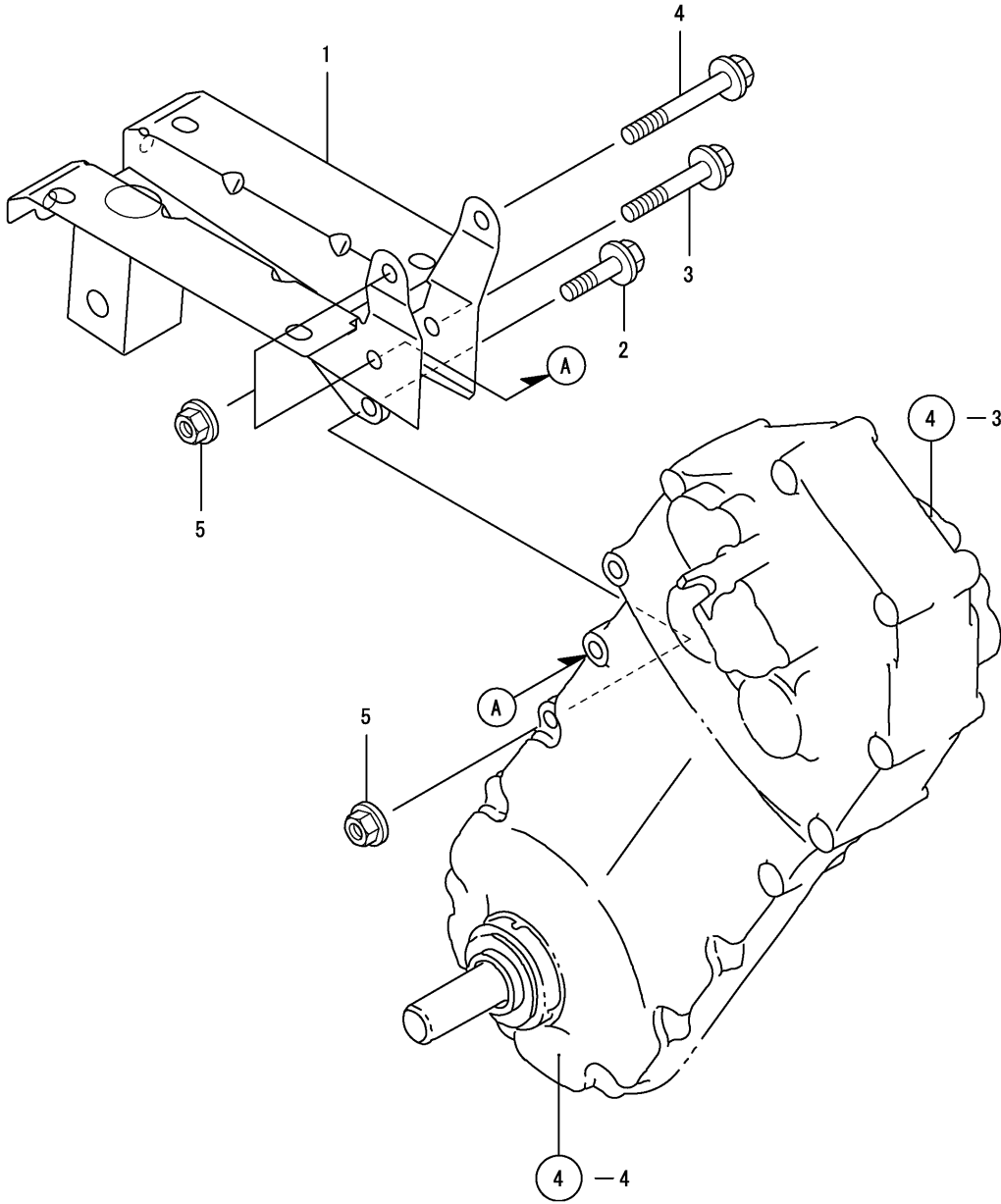


(A)=TE35
(B)=TE35D
(C)=

(D)=
(E)=
(F)=

REF.	LEV.	PARTS NO.	DESCRIPTION	Q'TY						I	R
				(A)	(B)	(C)	(D)	(E)	(F)		
1	1	1A2550-55101	LEVER,CHANGE	1	1						
2	1	1S6230-61670	COLLAR, CLUTCH	1	1						
3	1	1A1750-51150	FULCRUM COMP.,CHANGE	1	1						
4	1	1A2550-55520	WIRE CMP,MAIN CLUTCH	1	1						
4-1	1	1A2550-55600	WIRE CMP,MAIN CLUTCH	1	1						S
		(A=F001212) (B=F001212)									
5	1	1A2550-55550	LEVER CMP,ACCELERATO	1	1						
6	2	1A2550-55560	WIRE,ACCELERATOR	1	1						
7	2	1A2191-55581	LEVER,ACCELERATOR	1	1						
8	1	1A2320-55600	BAND, CABLE	2	2						
9	1	1A2132-55610	LEVER E,CLUTCH	1	1						
9-1	1	1A2009-55400	LEVER COMP.,DEADMAN	1	1						S
		(A=F001212) (B=F001212)									
10	1	1E6570-65750	GRIP,CONT.LEVER BLK.	1	1						
10-1	1	1E6570-65751	GRIP,CONTROL LEVER	1	1						R
		(A=FXXXXX) (B=FXXXXX)									
11	1	22137-060000	WASHER 6, POLISHED	1	1						
12	1	22417-160120	COTTER PIN 1.6X12	1	1						
13	1	22487-060260	PIN 6X26,FLAT HEAD	1	1						
14	1	26892-001000	NUT 10	1	1						
15	1	22137-060000	WASHER 6, POLISHED	1	1						W
		(A=F001212) (B=F001212)									
16	1	22372-080000	SNAP PIN (JASO 8)	1	1						W
		(A=F001212) (B=F001212)									
17	1	22417-200100	COTTER PIN 2.0X10	1	1						W
		(A=F001212) (B=F001212)									
18	1	22486-080400	PIN, H8X40	1	1						W
		(A=F001212) (B=F001212)									

Fig.15. ENGINE FRAME



0CNP4-G04000 15. ENGINE FRAME

(A)=TE35
(B)=TE35D
(C)=

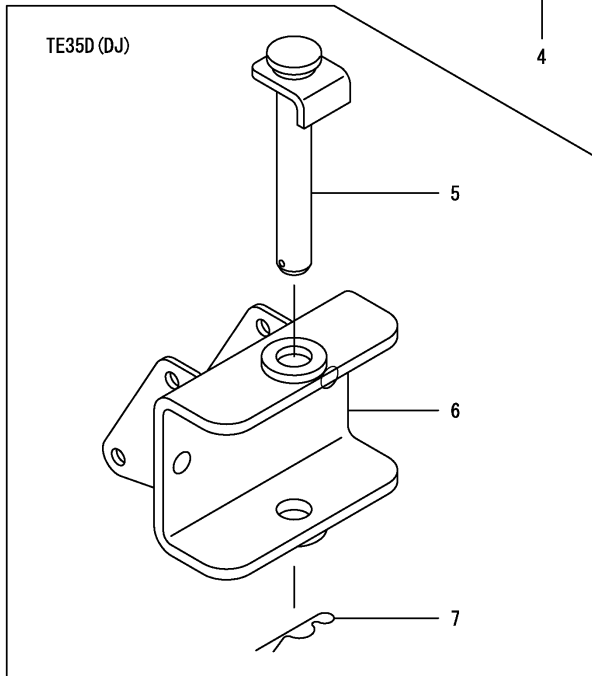
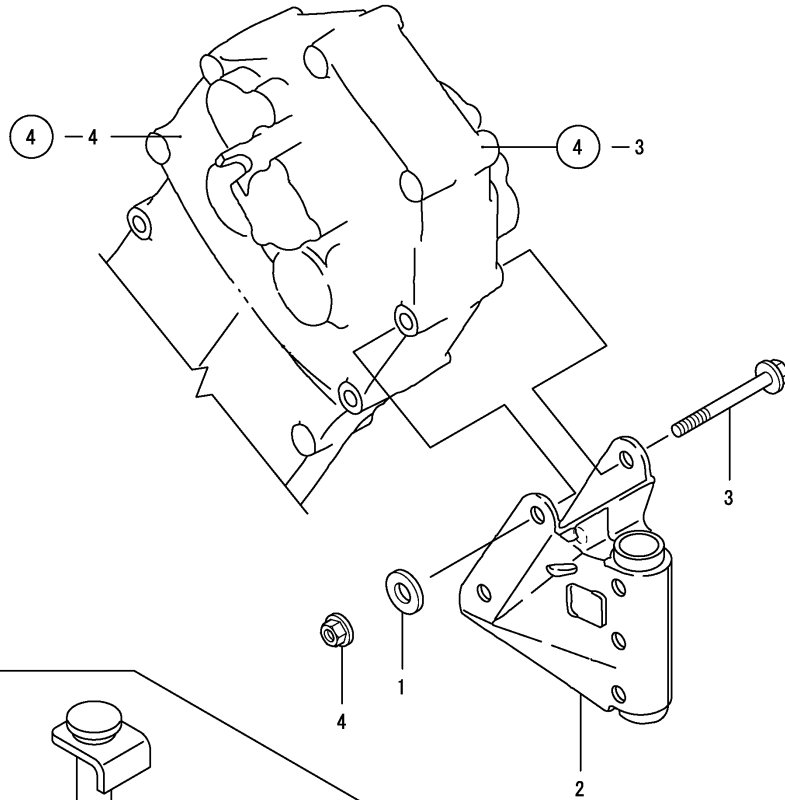
(D)=
(E)=
(F)=

REF.	LEV.	PARTS NO.	DESCRIPTION	Q'TY						I	R
				(A)	(B)	(C)	(D)	(E)	(F)		
1	1	1A2550-61101	FRAME CMP,ENGINE	1	1						
2	1	26107-080302	BOLT M 8X 30 PLATED	1	1						
3	1	26107-080502	BOLT M 8X 50 PLATED	1	1						
4	1	26107-080702	BOLT M 8X 70 PLATED	1	1						
5	1	26367-080002	U-NUT M 8	3	3						

Fig.16. HITCH

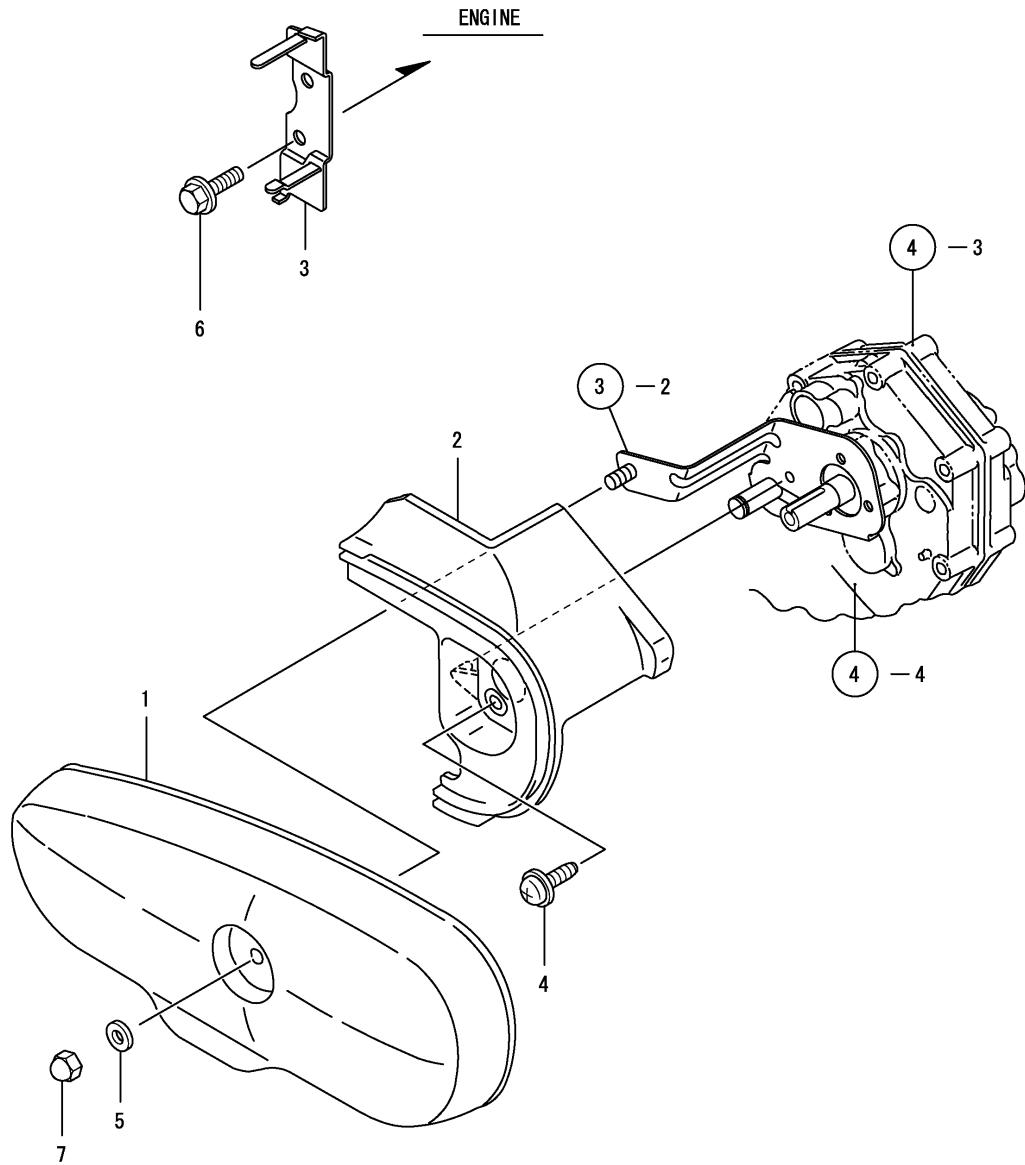
(A)=TE35
(B)=TE35D
(C)=

(D)=
(E)=
(F)=



REF.	LEV.	PARTS NO.	DESCRIPTION	QTY						I	R
				(A)	(B)	(C)	(D)	(E)	(F)		
1	1	1D1140-11420	WASHER,PULLEY	1	1						
2	1	1A1750-60500	HITCH COMP	1							
3	1	26107-080752	BOLT M8X75 PLATED	2	2						
4	1	26367-080002	U-NUT M 8	2	2						
5	1	1A2550-61200	PIN CMP,HITCH		1						
6	1	1A2550-61400	HITCH CMP		1						
7	1	22360-160000	SNAP PIN 16		1						

Fig.17. BELT COVER



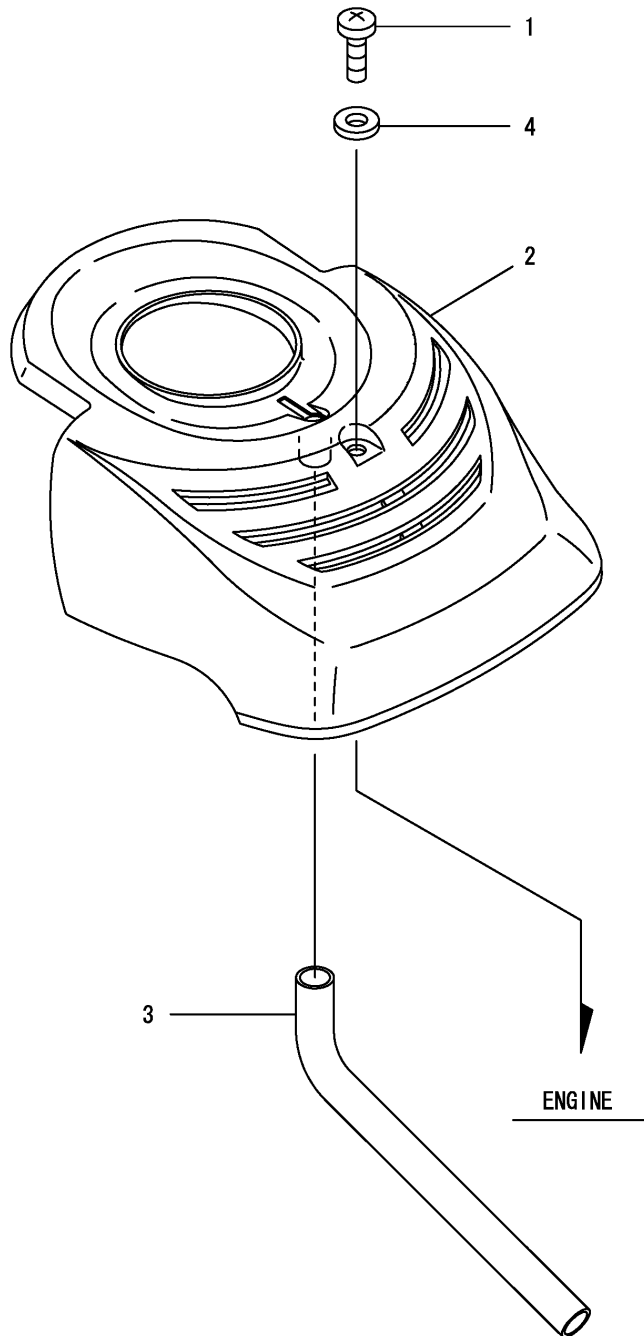
0CNP4-G04000 17. BELT COVER

(A)=TE35
(B)=TE35D
(C)=

(D)=
(E)=
(F)=

REF.	LEV.	PARTS NO.	DESCRIPTION	Q'TY						I	R
				(A)	(B)	(C)	(D)	(E)	(F)		
1	1	1A2190-62000	BELT COVER	1	1						
2	1	1A2190-62300	COVER, FLYWHEEL	1	1						
3	1	1A2550-62450	RETAINER CMP,BELT TE	1	1						
4	1	1A1750-90200	SCREW 6X12,COLLAR HD	3	3						
5	1	22157-080000	WASHER 8	1	1						
6	1	26107-080122	BOLT M 8X 12 PLATED	2	2						
7	1	26657-080002	CAP NUT M 8	1	1						

Fig.18. BONNET



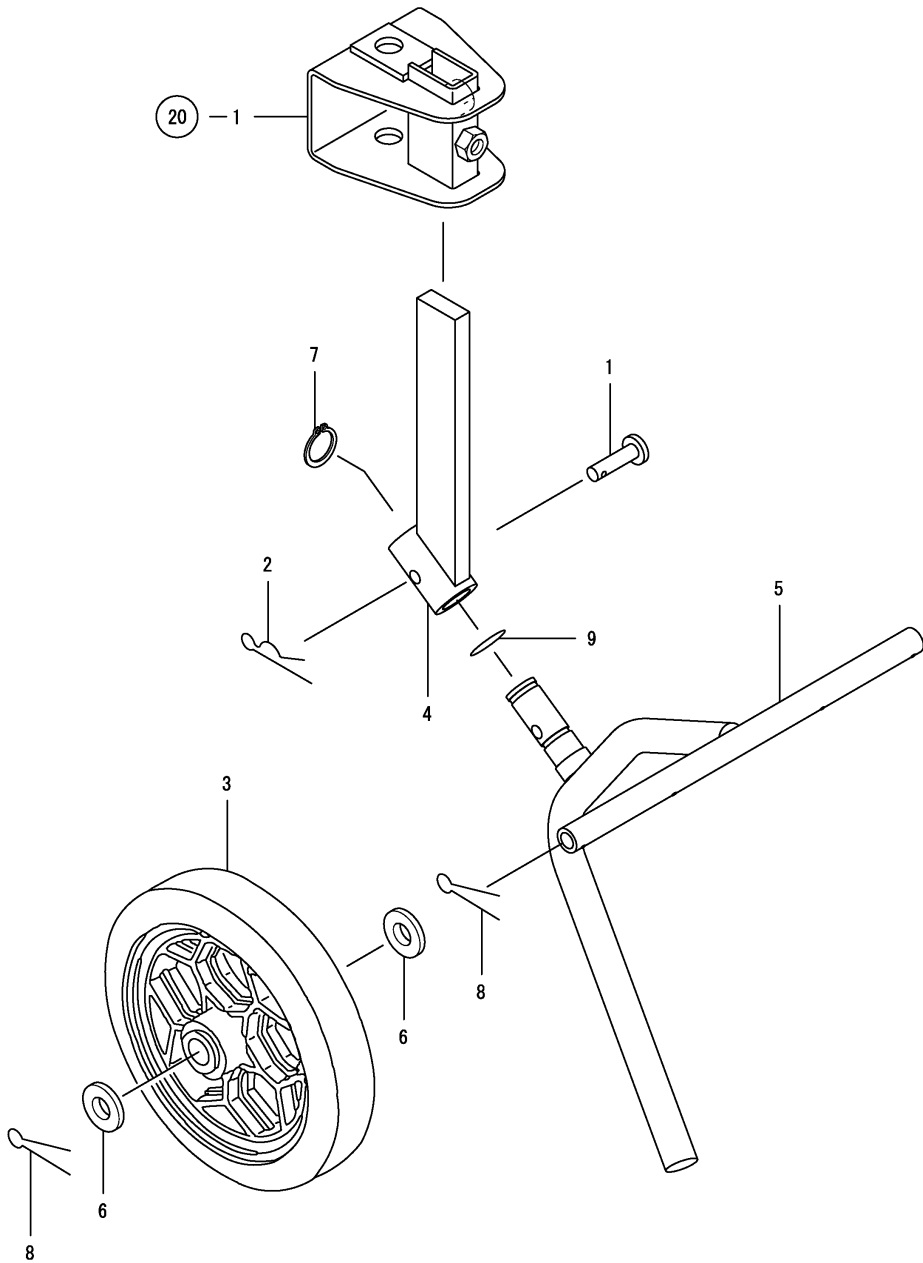
0CNP4-G04000 18. BONNET

(A)=TE35
(B)=TE35D
(C)=

(D)=
(E)=
(F)=

REF.	LEV.	PARTS NO.	DESCRIPTION	Q'TY						I	R
				(A)	(B)	(C)	(D)	(E)	(F)		
1	1	1A1735-55350 (A=FXXXXX) (B=FXXXXX)	SCREW 6X12,PAN HD.	1	1						Z
1-1	1	1A1686-52230 (A=FXXXXX) (B=FXXXXX)	SCREW, M6X16	1	1						W
2	1	1A2480-64200	REAR COVER	1	1						
3	1	1A2480-64310	BLOWING PIPE	1	1						
4	1	1A1750-90160 (A=FXXXXX) (B=FXXXXX)	WASHER 6, PLAIN	1	1						Z

Fig.19. SKID



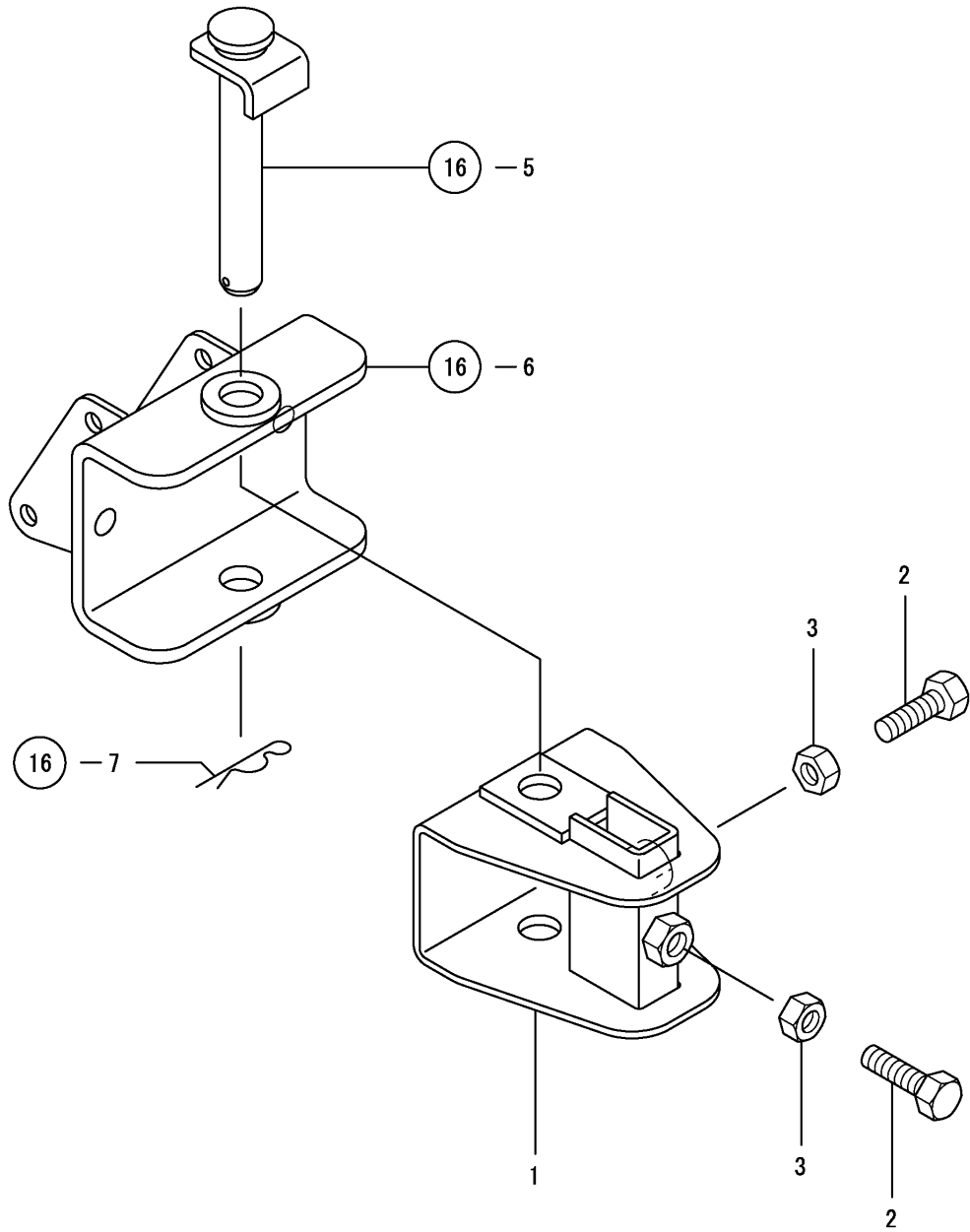
(A)=TE35
(B)=TE35D
(C)=

(D)=
(E)=
(F)=

REF.	LEV.	PARTS NO.	DESCRIPTION	Q'TY						I	R
				(A)	(B)	(C)	(D)	(E)	(F)		
1	1	1A1540-46010	PIN 8X35,FLAT HEAD		1						
2	1	1C6141-47970	SNAP PIN 8		1						
3	1	1A2170-72200	WHEEL 195,TAIL		2						
4	1	1A2550-75400	BAR,RESIST(UPPER CMP		1						
5	1	1A2550-75450	BAR,RESIST(LOWER CMP		1						
6	1	22137-160000	WASHER 16,POLISHED		4						
7	1	22242-000200	CIRCLIP 20		1						
8	1	22417-300300	COTTER PIN 3.0X30		4						
9	1	24341-000180	O-RING 1A S-18.0		1						

Remarks
*TE35DCH SET

Fig.20. UNIVERSAL HITCH



0CNP4-G04000 20. UNIVERSAL HITCH

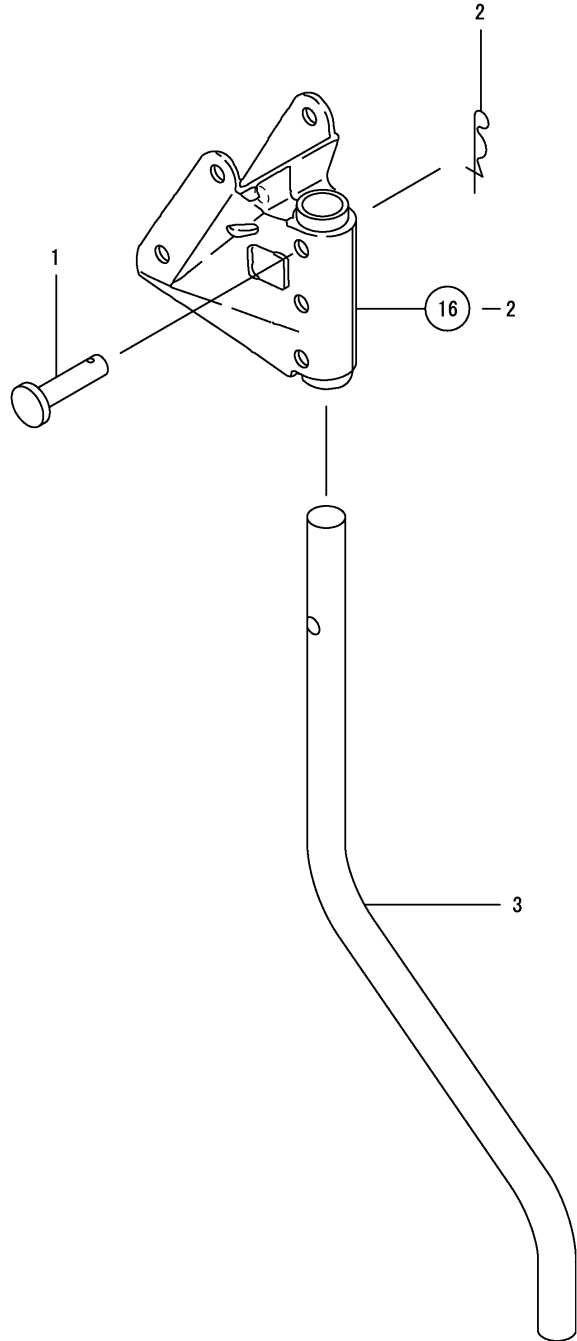
(A)=TE35
(B)=TE35D
(C)=

(D)=
(E)=
(F)=

REF.	LEV.	PARTS NO.	DESCRIPTION	Q'TY						I	R	
				(A)	(B)	(C)	(D)	(E)	(F)			
1	1	1A2132-75500	HITCH CMP.,UNIVERSAL		1							
2	1	26117-100302	BOLT M10X 30		2							
3	1	26717-100002	NUT M10		2							

Remarks
*TE35DCH SET

Fig.21. SKID

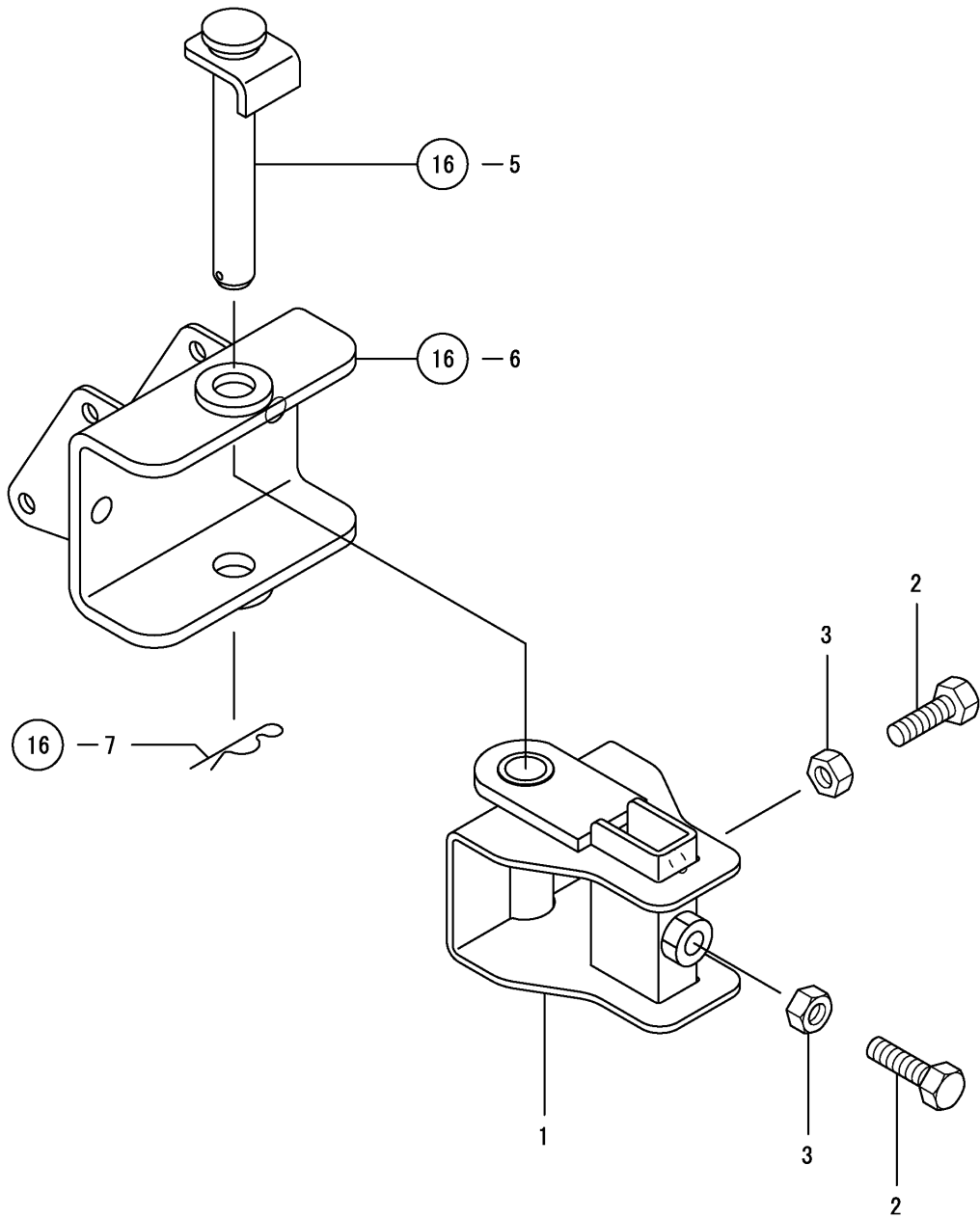


(A)=TE35
(B)=TE35D
(C)=

(D)=
(E)=
(F)=

REF.	LEV.	PARTS NO.	DESCRIPTION	Q'TY						I	R
				(A)	(B)	(C)	(D)	(E)	(F)		
1	1	1A1540-46010	PIN 8X35,FLAT HEAD	1							
2	1	1C6281-52320	PIN 8,COME-OFF SNAP	1							
3	1	1A2550-70000	BAR, RESISTANCE	1							

Fig.22. UNIVERSAL HITCH



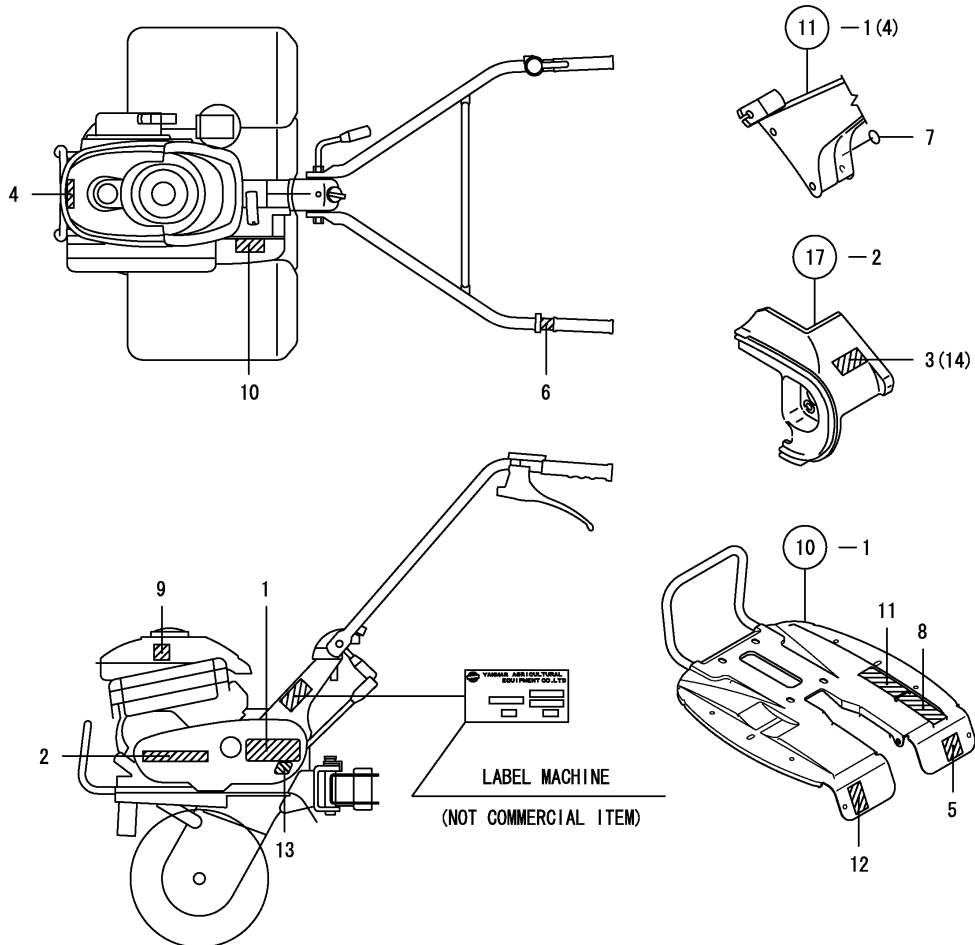
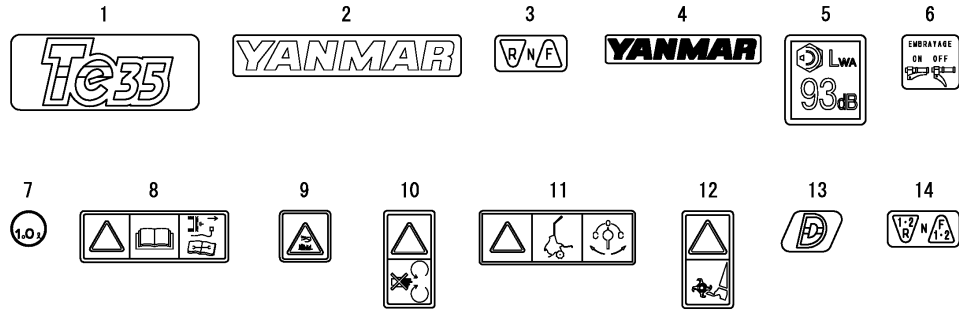
0CNP4-G04000 22. UNIVERSAL HITCH

(A)=TE35
(B)=TE35D
(C)=

(D)=
(E)=
(F)=

REF.	LEV.	PARTS NO.	DESCRIPTION	Q'TY						I	R	
				(A)	(B)	(C)	(D)	(E)	(F)			
1	1	1A2550-75501	HITCH CMP,UNIVERSAL		1							
2	1	26117-100302	BOLT M10X 30		2							
3	1	26717-100002	NUT M10		2							

Fig.24. LABELS



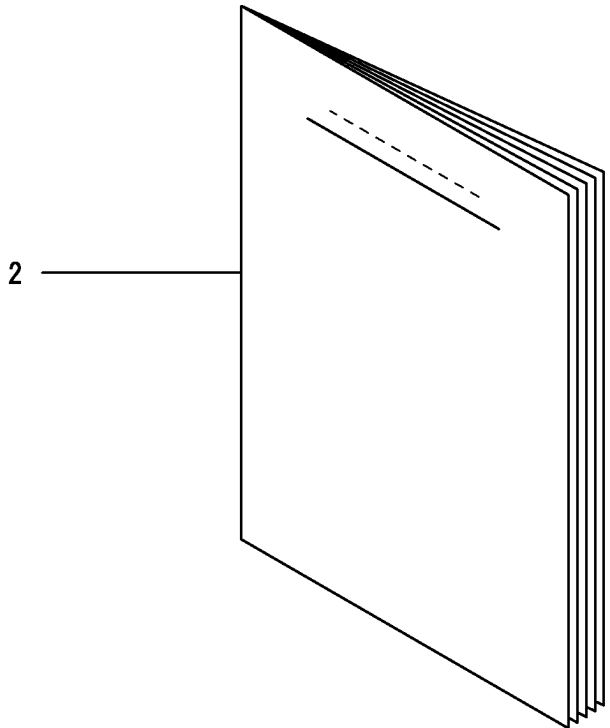
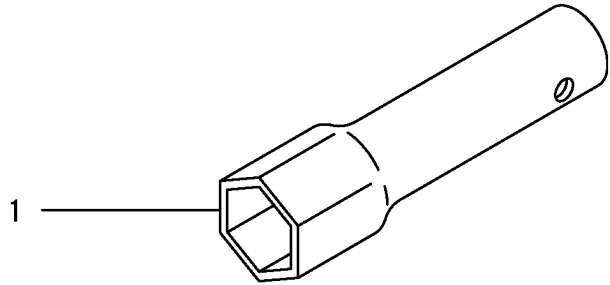
OCNP4-G04000 24. LABELS

(A)=TE35
(B)=TE35D
(C)=

(D)=
(E)=
(F)=

REF.	LEV.	PARTS NO.	DESCRIPTION	QTY						I	R
				(A)	(B)	(C)	(D)	(E)	(F)		
1	1	1A2550-86010	LABEL TE35,MODEL	1	1						
2	1	1A2150-86080	LABEL,FRONT MASK	1	1						
3	1	1A2550-86100	LABEL,CHANGE	1							
4	1	1A2240-86180	LABEL,YANMAR	1	1						
5	1	1A2179-86210		1	1						
6	1	1A2099-86340	LABEL,MAIN CLUTCH	1	1						
7	1	1A2138-86701	LABEL 1,OIL	1	1						
8	1	1A2199-86700	MARK,HANDLING CAUTN	1	1						
9	1	1A2199-86720	MARK,HI-TEMP.CAUTION	1	1						
10	1	1A2199-86840	MARK,BELT CVR.CAUTN	1	1						
11	1	1A2191-86900	MARK,COCK CAUTION	1	1						
12	1	1A2199-86900	MARK,ROTARY CAUTION	1	1						
13	1	1A2550-86020	LABEL(D)		1						
14	1	1A2550-86110	LABEL,CHANGE		1						

Fig.25. TOOLS & ACCESSORIES



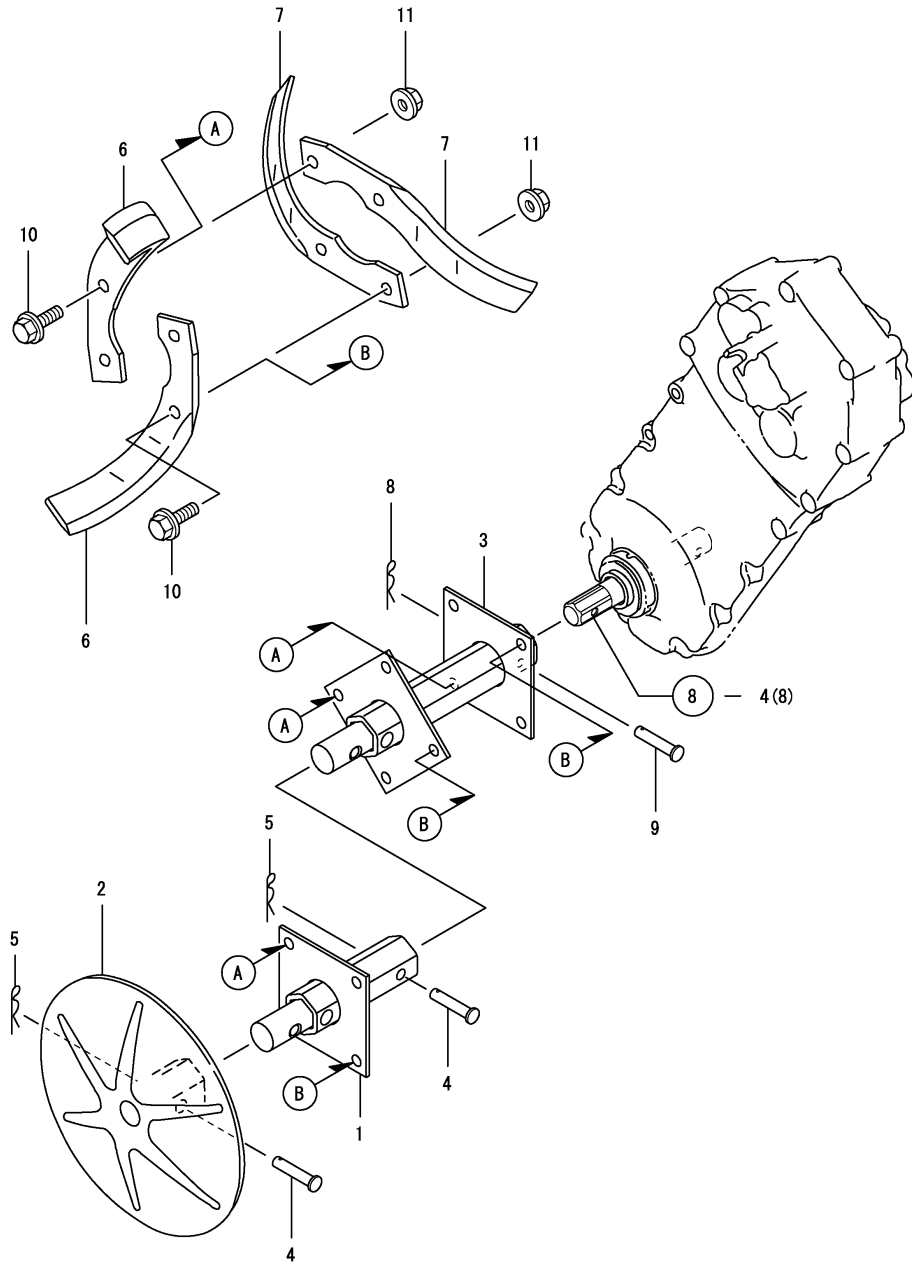
0CNP4-G04000 25. TOOLS & ACCESSORIES

(A)=TE35
(B)=TE35D
(C)=

(D)=
(E)=
(F)=

REF.	LEV.	PARTS NO.	DESCRIPTION	QTY						I	R
				(A)	(B)	(C)	(D)	(E)	(F)		
1	1	160110-92700	BOX, SPANNER	1	1						
2	1	1A2550-88000	MANUAL,OPERATION	1	1						

Fig.26. AXLE ROTOR



(A)=TE35
(B)=TE35D
(C)=

(D)=
(E)=
(F)=

REF.	LEV.	PARTS NO.	DESCRIPTION	QTY						I	R
				(A)	(B)	(C)	(D)	(E)	(F)		
1	1	1S0090-11050	SHAFT COMPL.,EXTENS		2						
2	1	1S0090-11070	DISK COMP		2						
3	1	1S0090-11090	SHAFT COMPL.,ROTOR		2						
4	1	1A1540-46010	PIN 8X35,FLAT HEAD		4						
5	1	1A1540-46020	PIN 8,SNAP		4						
6	1	1A1402-91180	TAIN L ROTOR		12						
I	6-1	1A1402-91181	ROTOR TINE L		12						N
		(B=FXXXXXX)									
7	1	1A1402-91190	TAIN R ROTOR		12						
I	7-1	1A1402-91191	ROTOR TINE R		12						N
		(B=FXXXXXX)									
8	1	22372-060000	SNAP PIN 6		2						
9	1	22486-060400	PIN 6*40		2						
10	1	26107-080202	BOLT M 8X 20 PLATED		24						
11	1	26367-080002	U-NUT M 8		24						

Remarks
*TE35DCH SET

Part Number Index

All parts are stipulated in the order of part numbers.

(Depending on the area in which the part is used.)

This index will display the location of the part according to each part number.

PARTS No. INDEX

PARTS No.	Fig.	Ref.No.
160110-92700	25	1
192040-56220	12	4
1A1104-28230	9	3
1A1402-91180	26	6
1A1402-91181	26	6 -1
1A1402-91190	26	7
1A1402-91191	26	7 -1
1A1470-20090	4	1
1A1540-46010	19	1
	21	1
	26	4
1A1540-46020	26	5
1A1686-52230	18	1 -1
1A1735-55350	18	1
1A1750-20410	4	2
1A1750-21350	9	1
1A1750-40800	23	1
1A1750-51150	14	3
1A1750-60500	16	2
1A1750-90060	13	2
1A1750-90150	13	3
1A1750-90160	18	4
1A1750-90200	9	5
	17	4
1A1860-20280	7	1
1A1860-20440	4	9
1A1860-20450	4	10
1A1860-20491	8	2
1A2009-55400	14	9 -1
1A2099-86340	24	6
1A2132-55610	14	9
1A2132-75500	20	1
1A2138-86701	24	7
1A2150-86080	24	2
1A2170-72200	19	3
1A2179-86210	24	5
1A2190-21010	4	3
1A2190-21020	4	4
1A2190-23010	5	1
1A2190-62000	17	1
1A2190-62300	17	2
1A2190-83100	23	2
1A2191-55581	14	7
1A2191-86900	24	11
1A2199-86700	24	8
1A2199-86720	24	9
1A2199-86840	24	10
1A2199-86900	24	12
1A2240-86180	24	4
1A2320-55600	14	8

PARTS No.	Fig.	Ref.No.
1A2480-64200	18	2
1A2480-64310	18	3
1A2490-13100	3	1
1A2490-13150	3	2
1A2490-13400	3	3
1A2490-51000	11	1
1A2490-51200	11	4
1A2490-51250	11	5
1A2490-51300	11	6
1A2490-51400	13	1
1A2490-51800	12	2
1A2490-51850	12	3
1A2490-83100	23	3
1A2491-23000	5	5
1A2550-12100	2	1
1A2550-12150	2	7
1A2550-12160	2	2
1A2550-13350	2	8
1A2550-13360	2	12
1A2550-13650	3	4
1A2550-20400	8	1
1A2550-23010	5	2
1A2550-23100	6	1
1A2550-23400	7	2
1A2550-23430	7	3
1A2550-23470	8	3
1A2550-24000	8	4
1A2550-24050	8	5
1A2550-24100	8	6
1A2550-27000	9	2
1A2550-32000	10	1
1A2550-32100	10	2
1A2550-51600	12	1
1A2550-51700	11	7
1A2550-51800	12	1 -1
1A2550-55101	14	1
1A2550-55520	14	4
1A2550-55550	14	5
1A2550-55560	14	6
1A2550-55600	14	4 -1
1A2550-61101	15	1
1A2550-61200	16	5
1A2550-61400	16	6
1A2550-62450	17	3
1A2550-70000	21	3
1A2550-75400	19	4
1A2550-75450	19	5
1A2550-75501	22	1
1A2550-86010	24	1
1A2550-86020	24	13

PARTS No.	Fig.	Ref.No.
1A2550-86100	24	3
1A2550-86110	24	14
1A2550-88000	25	2
1A2551-23010	5	6
1A2551-23100	6	3
1A2551-23400	7	6
1A2551-23430	7	7
1A2551-24000	8	8
1C6141-47970	19	2
1C6281-52320	21	2
1D1140-11420	16	1
1D1630-51050	2	3
		9
1E6150-56040	9	4
1E6570-65750	12	5
	14	10
1E6570-65751	12	5 -1
	14	10 -1
1S0090-11050	26	1
1S0090-11070	26	2
1S0090-11090	26	3
1S6230-61670	14	2

PARTS No.	Fig.	Ref.No.
-----------	------	---------



YANMAR CO.,LTD.